

# ARMCX2 Antibody



PACO36998

---

## Product Information

**Size:**

50ug

**Reactivity:**

Human

**Source:**

Rabbit

**Isotype:**

IgG

**Applications:**

ELISA, WB, IHC

**Recommended dilutions:**

ELISA:1:2000-1:10000, WB:1:500-1:2000,  
IHC:1:20-1:200

**Protein Background:**

May regulate the dynamics and distribution of mitochondria in neural cells.

**Gene ID:**

ARMCX2

**Uniprot**

Q7L311

**Synonyms:**

Armadillo repeat-containing X-linked protein 2 (ARM protein lost in epithelial cancers on chromosome X 2) (Protein ALEX2), ARMCX2, ALEX2 KIAA0512

**Immunogen:**

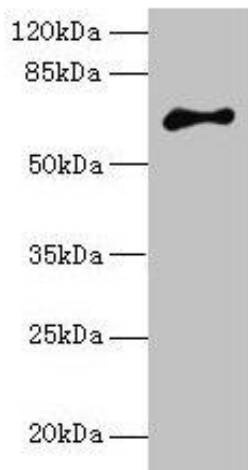
Recombinant Human Armadillo repeat-containing X-linked protein 2 protein (161-460AA).

**Storage:**

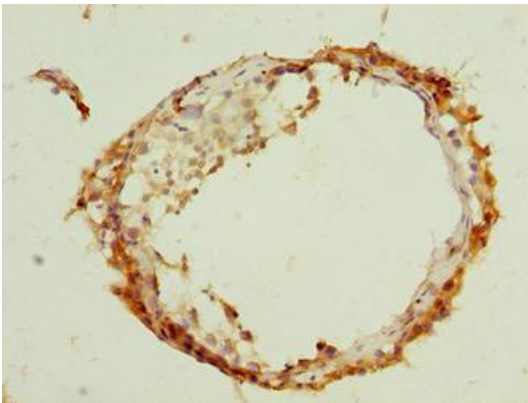
Preservative: 0.03% Proclin 300. Constituents: 50% Glycerol, 0.01M PBS, PH 7.4

## Product Images

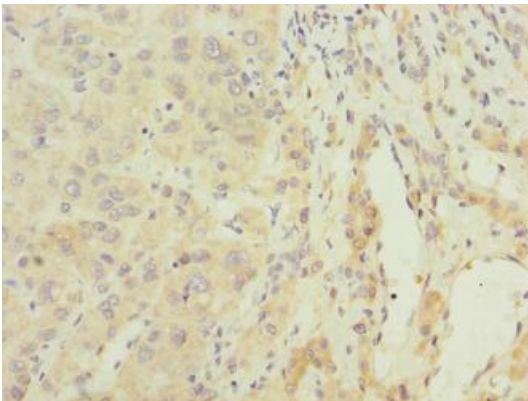
---



Western blot. All lanes: ARM CX2 antibody at 5 $\mu$ g/ml + MCF-7 whole cell lysate. Secondary. Goat polyclonal to rabbit IgG at 1/10000 dilution. Predicted band size: 66 kDa. Observed band size: 66 kDa.



Immunohistochemistry of paraffin-embedded human testis tissue using PACO36998 at dilution of 1:100.



Immunohistochemistry of paraffin-embedded human liver cancer using PACO36998 at dilution of 1:100.