

# SLC23A3 Antibody



PACO37074

---

## Product Information

**Size:**

50ug

**Reactivity:**

Human

**Source:**

Rabbit

**Isotype:**

IgG

**Applications:**

ELISA, IHC, IF

**Recommended dilutions:**

ELISA:1:2000-1:10000, IHC:1:20-1:200,  
IF:1:50-1:200

**Protein Background:****Gene ID:**

SLC23A3

**Uniprot**

Q6PIS1

**Synonyms:**

Solute carrier family 23 member 3 (HPC E2-binding protein 3) (Na<sup>+</sup>)/L-ascorbic acid, transporter 3) (Sodium-dependent vitamin C transporter 3), SLC23A3, E2BP3 SVCT3

**Immunogen:**

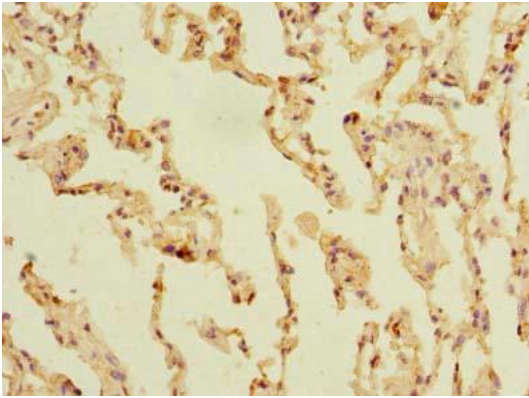
Recombinant Human Solute carrier family 23 member 3 protein (391-492AA).

**Storage:**

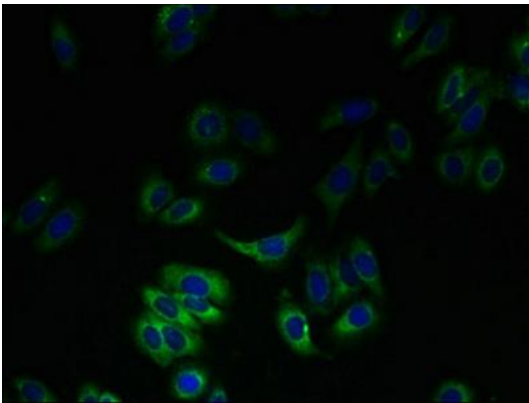
Preservative: 0.03% Proclin 300. Constituents: 50% Glycerol, 0.01M PBS, PH 7.4

## Product Images

---



Immunohistochemistry of paraffin-embedded human lung tissue using PACO37074 at dilution of 1:100.



Immunofluorescent analysis of HepG2 cells using PACO37074 at dilution of 1:100 and Alexa Fluor 488-conjugated AffiniPure Goat Anti-Rabbit IgG(H+L).