

PACO37082

Product Information

Size:

50ug

Reactivity:

Human

Source:

Rabbit

Isotype:

IgG

Applications:

ELISA, IHC

Recommended dilutions:

ELISA:1:2000-1:10000, IHC:1:20-1:200

Protein Background:

Functions as a dominant-negative VHL to serve as a protector of HIFalpha.

Gene ID:

VHLL

Uniprot

Q6RSH7

Synonyms:

von Hippel-Lindau-like protein (VHL-like protein) (VLP), VHLL, VLP

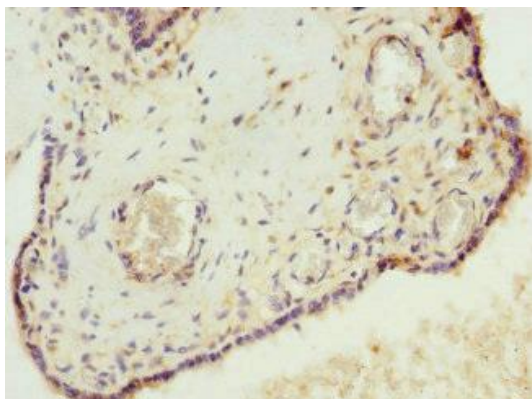
Immunogen:

Recombinant Human von Hippel-Lindau-like protein (1-139AA).

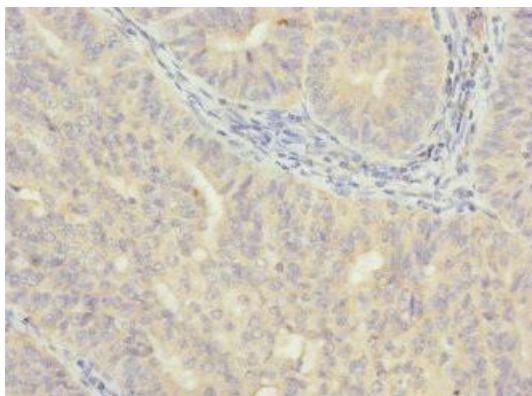
Storage:

Preservative: 0.03% Proclin 300. Constituents: 50% Glycerol, 0.01M PBS, PH 7.4

Product Images



Immunohistochemistry of paraffin-embedded human placenta tissue using PACO37082 at dilution of 1:100.



Immunohistochemistry of paraffin-embedded human endometrial cancer using PACO37082 at dilution of 1:100.