

SIGLEC15 Antibody



PACO37110

Product Information

Size:

50ug

Reactivity:

Human, Mouse

Source:

Rabbit

Isotype:

IgG

Applications:

ELISA, WB

Recommended dilutions:

ELISA:1:2000-1:10000, WB:1:500-1:2000

Protein Background:

Binds sialylated glycoproteins.

Gene ID:

SIGLEC15

Uniprot

Q6ZMC9

Synonyms:

Sialic acid, binding Ig-like lectin 15 (Siglec-15) (CD33 antigen-like 3), SIGLEC15, CD33L3

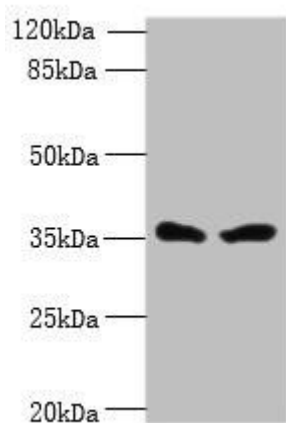
Immunogen:

Recombinant Human Sialic acid, binding Ig-like lectin 15 protein (20-263AA).

Storage:

Preservative: 0.03% Proclin 300. Constituents: 50% Glycerol, 0.01M PBS, PH 7.4

Product Images



Western blot. All lanes: SIGLEC15 antibody at 10 μ g/ml. Lane 1: Mouse spleen tissue. Lane 2: Jurkat whole cell lysate. Secondary: Goat polyclonal to rabbit IgG at 1/10000 dilution. Predicted band size: 36, 19 kDa. Observed band size: 36 kDa.