

### Product Information

**Size:**

50ug

**Reactivity:**

Human

**Source:**

Rabbit

**Isotype:**

IgG

**Applications:**

ELISA, IHC

**Recommended dilutions:**

ELISA:1:2000-1:10000, IHC:1:20-1:200

**Protein Background:**

Receptor that may play a role in the perception of bitterness and is gustducin-linked. May play a role in sensing the chemical composition of the gastrointestinal content. The activity of this receptor may stimulate alpha gustducin, mediate PLC-beta-2 activation and lead to the gating of TRPM5.

**Gene ID:**

TAS2R42

**Uniprot**

Q7RTR8

**Synonyms:**

Taste receptor type 2 member 42 (T2R42) (Taste receptor type 2 member 55) (T2R55), TAS2R42, TAS2R55

**Immunogen:**

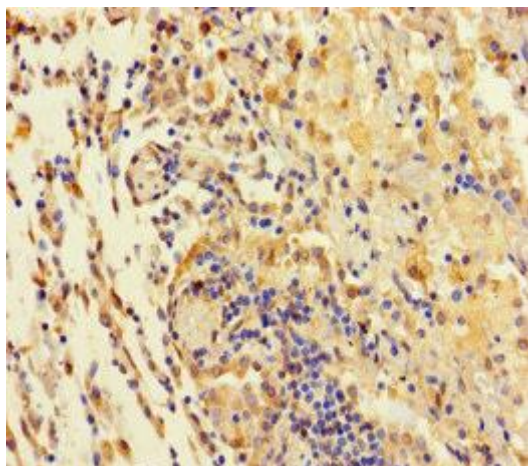
Recombinant Human Taste receptor type 2 member 42 protein (149-187AA).

**Storage:**

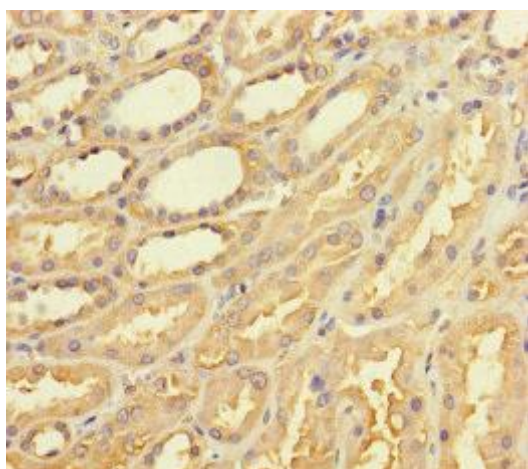
Preservative: 0.03% Proclin 300. Constituents: 50% Glycerol, 0.01M PBS, PH 7.4

## Product Images

---



Immunohistochemistry of paraffin-embedded human lung cancer using PACO37210 at dilution of 1:100.



Immunohistochemistry of paraffin-embedded human kidney tissue using PACO37210 at dilution of 1:100.