

Product Information

Size:

50ug

Reactivity:

Human

Source:

Rabbit

Isotype:

IgG

Applications:

ELISA, IHC

Recommended dilutions:

ELISA:1:2000-1:10000, IHC:1:20-1:200

Protein Background:

Prevents apoptosis in hepatocellular carcinoma (HCC) cells through interaction with SIAH1, a mediator of apoptosis. May also have a role in cell growth promotion and hepatoma formation. Inhibits the TGF-beta signaling by interacting with the TGF-beta receptor ALK1. When overexpressed, induces the formation of cellular extension, such as filipodia in association with ALK1. Involved at the immediate early stage of adipocyte differentiation By similarity. May bind to the 5'-GCCTGTCTTT-3' DNA sequence of the MB1 domain in the myelin basic protein (MBP) promoter.

Gene ID:

PEG10

Uniprot

Q86TG7

Synonyms:

Retrotransposon-derived protein PEG10 (Embryonal carcinoma differentiation-regulated protein) (Mammalian retrotransposon-derived protein 2) (Myelin expression factor 3-like protein 1) (MEF3-like protein 1) (Paternally expressed gene 10 protein) (Retrotransposon gag domain-containing protein 3) (Retrotransposon-derived gag-like polyprotein) (Ty3/Gypsy-like protein), PEG10, EDR KIAA1051 MAR2 MART2 MEF3L1 RGAG3

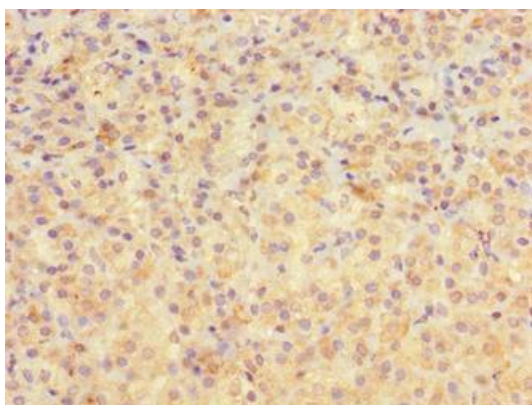
Immunogen:

Recombinant Human Retrotransposon-derived protein PEG10 protein (1-325AA).

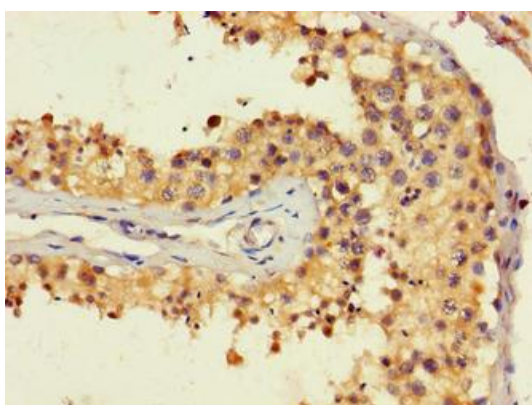
Storage:

Preservative: 0.03% Proclin 300. Constituents: 50% Glycerol, 0.01M PBS, PH 7.4

Product Images



Immunohistochemistry of paraffin-embedded human adrenal gland tissue using PACO37226 at dilution of 1:100.



Immunohistochemistry of paraffin-embedded human testis tissue using PACO37226 at dilution of 1:100.