

# ITIH5 Antibody



PACO37238

---

## Product Information

**Size:**

50ug

**Reactivity:**

Human

**Source:**

Rabbit

**Isotype:**

IgG

**Applications:**

ELISA, IHC

**Recommended dilutions:**

ELISA:1:2000-1:10000, IHC:1:20-1:200

**Protein Background:**

May act as a tumor suppressor.

**Gene ID:**

ITIH5

**Uniprot**

Q86UX2

**Synonyms:**

Inter-alpha-trypsin inhibitor heavy chain H5 (ITI heavy chain H5) (ITI-HC5) (Inter-alpha-inhibitor heavy chain 5), ITIH5, KIAA1953

**Immunogen:**

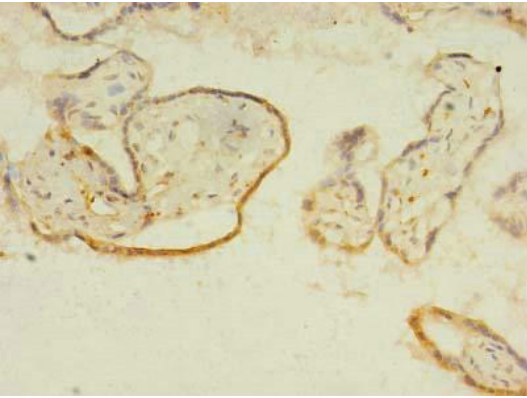
Recombinant Human Inter-alpha-trypsin inhibitor heavy chain H5 protein (35-161AA).

**Storage:**

Preservative: 0.03% Proclin 300. Constituents: 50% Glycerol, 0.01M PBS, PH 7.4

## Product Images

---



Immunohistochemistry of paraffin-embedded human placenta tissue using PACO37238 at dilution of 1:100.