

PACO37382

---

## Product Information

**Size:**

50ug

**Reactivity:**

Human

**Source:**

Rabbit

**Isotype:**

IgG

**Applications:**

ELISA, IHC

**Recommended dilutions:**

ELISA:1:2000-1:10000, IHC:1:20-1:200

**Protein Background:**

May modulate activity of cullin-RING E3 ubiquitin ligase (CRL) complexes. Down-regulates activation of NF-kappa-B. Inhibits TNF-induced NFKB1 activation.

**Gene ID:**

COMMD6

**Uniprot**

Q7Z4G1

**Synonyms:**

COMM domain-containing protein 6, COMMD6

**Immunogen:**

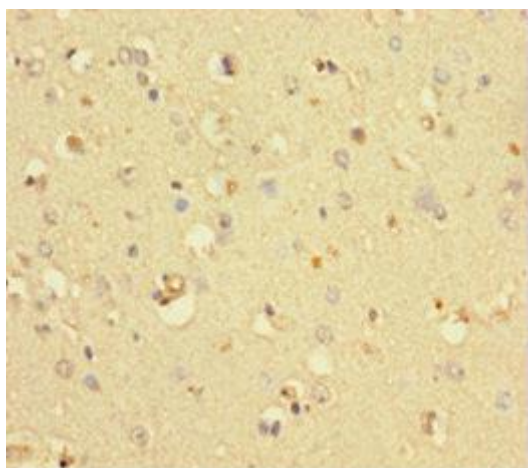
Recombinant Human COMM domain-containing protein 6 protein (1-85AA).

**Storage:**

Preservative: 0.03% Proclin 300. Constituents: 50% Glycerol, 0.01M PBS, PH 7.4

## Product Images

---



Immunohistochemistry of paraffin-embedded human brain tissue using PACO37382 at dilution of 1:100.