

PACO37394

---

## Product Information

**Size:**

50ug

**Reactivity:**

Human

**Source:**

Rabbit

**Isotype:**

IgG

**Applications:**

ELISA, IHC

**Recommended dilutions:**

ELISA:1:2000-1:10000, IHC:1:20-1:200

**Protein Background:**

extracellular space.

**Gene ID:**

ABI3BP

**Uniprot**

Q7Z7G0

**Synonyms:**

Target of Nesh-SH3 (Tarsh) (ABI gene family member 3-binding protein) (Nesh-binding protein) (NeshBP), ABI3BP, NESHBP TARSH

**Immunogen:**

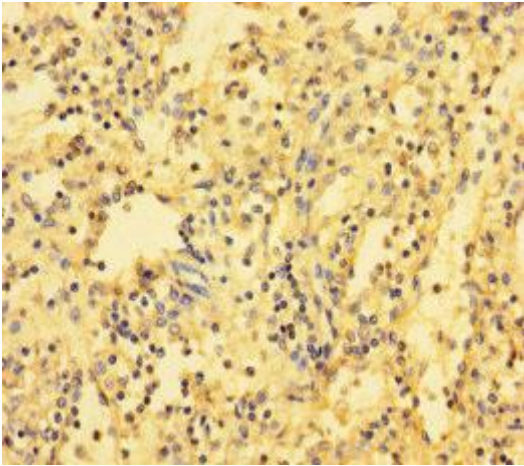
Recombinant Human Target of Nesh-SH3 protein (601-900AA).

**Storage:**

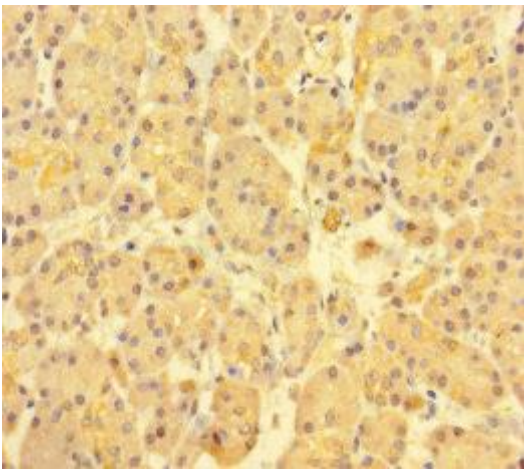
Preservative: 0.03% Proclin 300. Constituents: 50% Glycerol, 0.01M PBS, PH 7.4

## Product Images

---



Immunohistochemistry of paraffin-embedded human spleen tissue using PACO37394 at dilution of 1:100.



Immunohistochemistry of paraffin-embedded human pancreatic tissue using PACO37394 at dilution of 1:100.