

SLC46A3 Antibody



PACO37446

Product Information

Size:

50ug

Reactivity:

Human

Source:

Rabbit

Isotype:

IgG

Applications:

ELISA, WB, IHC, IF

Recommended dilutions:

ELISA:1:2000-1:10000, WB:1:500-1:2000,
IHC:1:20-1:200, IF:1:50-1:200

Protein Background:

Gene ID:

SLC46A3

Uniprot

Q7Z3Q1

Synonyms:

Solute carrier family 46 member 3, SLC46A3

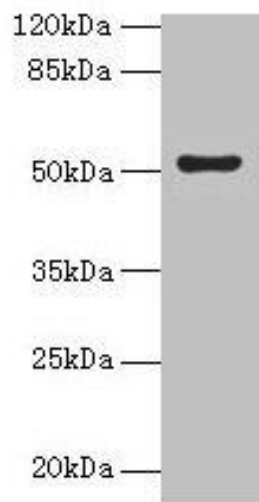
Immunogen:

Recombinant Human Solute carrier family 46 member 3 protein (26-73AA).

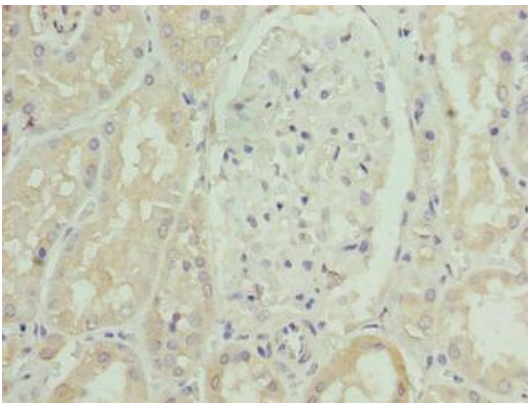
Storage:

Preservative: 0.03% Proclin 300. Constituents: 50% Glycerol, 0.01M PBS, PH 7.4

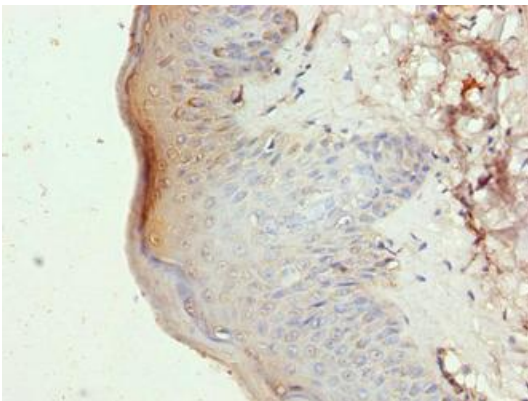
Product Images



Western blot. All lanes: SLC46A3 antibody at 4 μ g/ml + Jurkat whole cell lysate. Secondary. Goat polyclonal to rabbit IgG at 1/10000 dilution. Predicted band size: 52, 43 kDa. Observed band size: 52 kDa.



Immunohistochemistry of paraffin-embedded human kidney tissue using PACO37446 at dilution of 1:100.



Immunohistochemistry of paraffin-embedded human skin tissue using PACO37446 at dilution of 1:100.