

# SAMD7 Antibody



PACO37538

---

## Product Information

**Size:**

50ug

**Reactivity:**

Human

**Source:**

Rabbit

**Isotype:**

IgG

**Applications:**

ELISA, IHC

**Recommended dilutions:**

ELISA:1:2000-1:10000, IHC:1:20-1:200

**Protein Background:**

**Gene ID:**

SAMD7

**Uniprot**

Q7Z3H4

**Synonyms:**

Sterile alpha motif domain-containing protein 7 (SAM domain-containing protein 7), SAMD7

**Immunogen:**

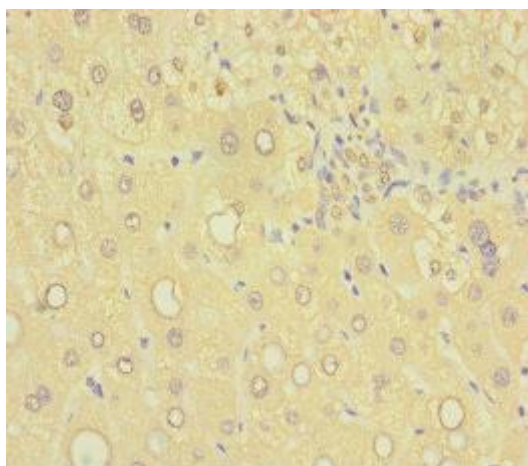
Recombinant Human Sterile &alpha; motif domain-containing protein 7 protein (1-300AA).

**Storage:**

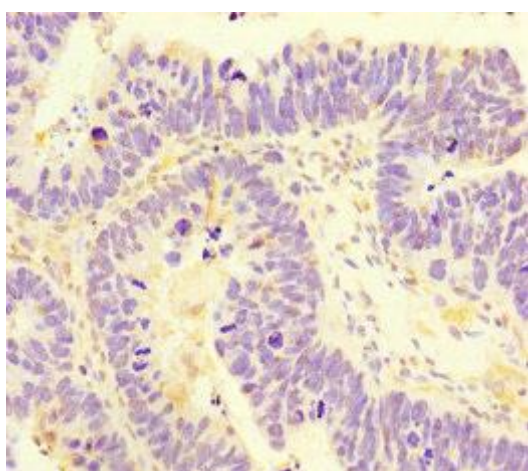
Preservative: 0.03% Proclin 300. Constituents: 50% Glycerol, 0.01M PBS, PH 7.4

## Product Images

---



Immunohistochemistry of paraffin-embedded human liver tissue using PACO37538 at dilution of 1:100.



Immunohistochemistry of paraffin-embedded human ovarian cancer using PACO37538 at dilution of 1:100.