

SEPT12 Antibody



PACO37630

Product Information

Size:

50ug

Reactivity:

Human, Mouse

Source:

Rabbit

Isotype:

IgG

Applications:

ELISA, WB, IF

Recommended dilutions:

ELISA:1:2000-1:10000, WB:1:500-1:5000,
IF:1:50-1:200

Protein Background:

Filament-forming cytoskeletal GTPase. May play a role in cytokinesis (Potential).

Gene ID:

41153

Uniprot

Q8IYM1

Synonyms:

Septin-12, SEPT12

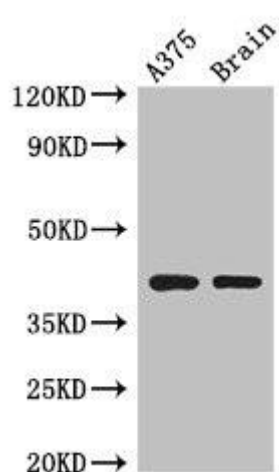
Immunogen:

Recombinant Human Septin-12 protein (1-358AA).

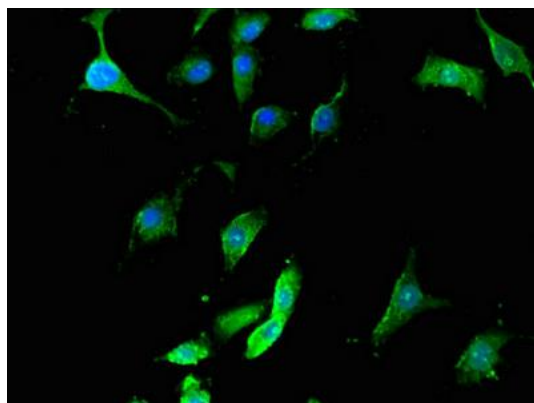
Storage:

Preservative: 0.03% Proclin 300. Constituents: 50% Glycerol, 0.01M PBS, PH 7.4

Product Images



Western Blot. Positive WB detected in: A375 whole cell lysate, Mouse brain tissue. All lanes: SEPT12 antibody at 3.5 μ g/ml. Secondary. Goat polyclonal to rabbit IgG at 1/50000 dilution. Predicted band size: 41, 36 kDa. Observed band size: 41 kDa.



Immunofluorescent analysis of U251 cells using PACO37630 at dilution of 1:100 and Alexa Fluor 488-conjugated AffiniPure Goat Anti-Rabbit IgG(H+L).