

Product Information

Size:

50ug

Reactivity:

Human, Mouse

Source:

Rabbit

Isotype:

IgG

Applications:

ELISA, WB

Recommended dilutions:

ELISA:1:2000-1:10000, WB:1:1000-1:5000

Protein Background:

This protein is a component of the heterogeneous nuclear ribonucleoprotein (hnRNP) complexes which provide the substrate for the processing events that pre-mRNAs undergo before becoming functional, translatable mRNAs in the cytoplasm. Mediates pre-mRNA alternative splicing regulation. Inhibits, together with CUGBP1, insulin receptor (IR) pre-mRNA exon 11 inclusion in myoblast. Binds to the IR RNA. Binds poly(RG).

Gene ID:

OFCC1

Uniprot

Q8IZS5

Synonyms:

Orofacial cleft 1 candidate gene 1 protein (Orofacial clefting chromosomal breakpoint region candidate 1 protein), OFCC1, MRDS1

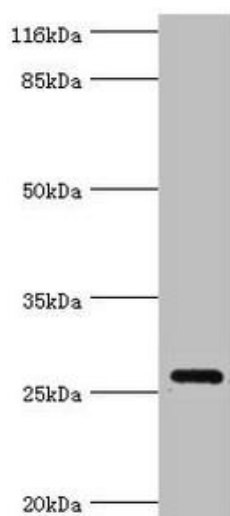
Immunogen:

Recombinant Human Orofacial cleft 1 candidate gene 1 protein (3-231AA).

Storage:

Preservative: 0.03% Proclin 300. Constituents: 50% Glycerol, 0.01M PBS, PH 7.4

Product Images



Western blot. All lanes: OFCC1 antibody at 2 μ g/ml + Mouse gonadal tissue. Secondary. Goat polyclonal to rabbit IgG at 1/10000 dilution. Predicted band size: 27, 32, 21, 14, 16 kDa. Observed band size: 27 kDa.