

# CMTM8 Antibody



PACO37646

---

## Product Information

**Size:**

50ug

**Reactivity:**

Human

**Source:**

Rabbit

**Isotype:**

IgG

**Applications:**

ELISA, IF

**Recommended dilutions:**

ELISA:1:2000-1:10000, IF:1:50-1:200

**Protein Background:****Gene ID:**

CMTM8

**Uniprot**

Q8IZV2

**Synonyms:**

CKLF-like MARVEL transmembrane domain-containing protein 8 (Chemokine-like factor superfamily member 8), CMTM8, CKLFSF8

**Immunogen:**

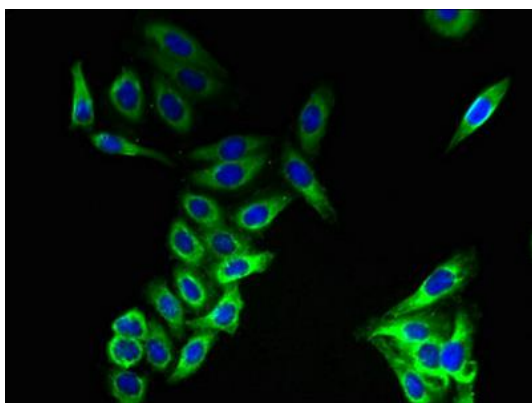
Recombinant Human CKLF-like MARVEL transmembrane domain-containing protein 8 protein (1-39AA).

**Storage:**

Preservative: 0.03% Proclin 300. Constituents: 50% Glycerol, 0.01M PBS, PH 7.4

## Product Images

---



Immunofluorescent analysis of HepG2 cells using PACO37646 at dilution of 1:100 and Alexa Fluor 488-conjugated AffiniPure Goat Anti-Rabbit IgG(H+L).