

# GLB1L2 Antibody



PACO37702

---

## Product Information

**Size:**

50ug

**Reactivity:**

Human

**Source:**

Rabbit

**Isotype:**

IgG

**Applications:**

ELISA, IHC

**Recommended dilutions:**

ELISA:1:2000-1:10000, IHC:1:20-1:200

**Protein Background:**

beta-galactosidase activity.

**Gene ID:**

GLB1L2

**Uniprot**

Q8IW92

**Synonyms:**

Beta-galactosidase-1-like protein 2 (EC 3.2.1. -), GLB1L2

**Immunogen:**

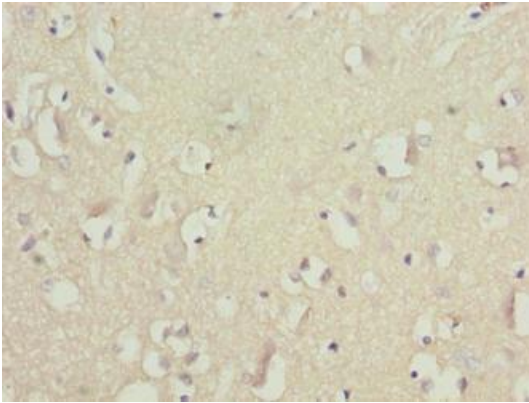
Recombinant Human Beta-galactosidase-1-like protein 2 protein (401-636AA).

**Storage:**

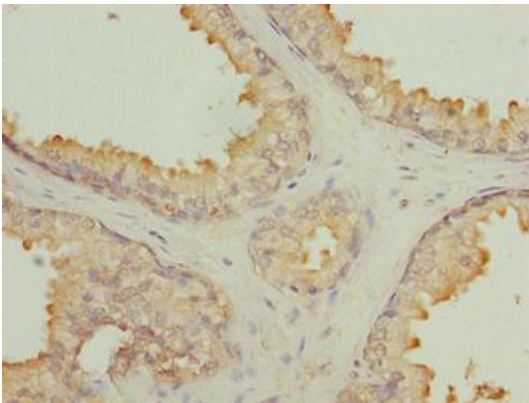
Preservative: 0.03% Proclin 300. Constituents: 50% Glycerol, 0.01M PBS, PH 7.4

## Product Images

---



Immunohistochemistry of paraffin-embedded human brain tissue using PACO37702 at dilution of 1:100.



Immunohistochemistry of paraffin-embedded human prostate cancer using PACO37702 at dilution of 1:100.