

# MRPL41 Antibody



PACO37706

---

## Product Information

**Size:**

50ug

**Reactivity:**

Human

**Source:**

Rabbit

**Isotype:**

IgG

**Applications:**

ELISA, IHC

**Recommended dilutions:**

ELISA:1:2000-1:10000, IHC:1:20-1:200

**Protein Background:**

Component of the mitochondrial ribosome large subunit. Also involved in apoptosis and cell cycle. Enhances p53/TP53 stability, thereby contributing to p53/TP53-induced apoptosis in response to growth-inhibitory condition. Enhances p53/TP53 translocation to the mitochondria. Has the ability to arrest the cell cycle at the G1 phase, possibly by stabilizing the CDKN1A and CDKN1B (p27Kip1) proteins.

**Gene ID:**

MRPL41

**Uniprot**

Q8IXM3

**Synonyms:**

39S ribosomal protein L41, mitochondrial (L41mt) (MRP-L41) (39S ribosomal protein L27 homolog) (Bcl-2-interacting mitochondrial ribosomal protein L41) (Cell proliferation-inducing gene 3 protein) (MRP-L27 homolog) (Mitochondrial large ribosomal subunit protein mL41), MRPL41, BMRP MRPL27 RPML27

**Immunogen:**

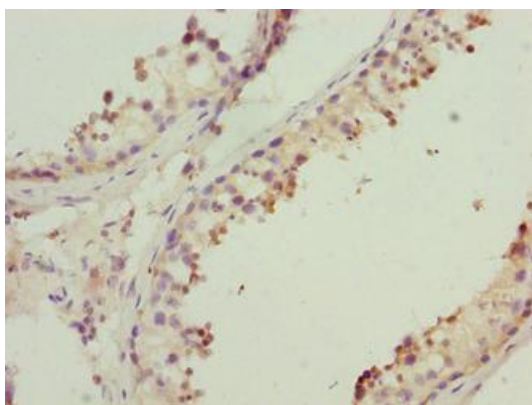
Recombinant Human 39S ribosomal protein L41, mitochondrial protein (14-137AA).

**Storage:**

Preservative: 0.03% Proclin 300. Constituents: 50% Glycerol, 0.01M PBS, PH 7.4

## Product Images

---



Immunohistochemistry of paraffin-embedded human testis tissue using PACO37706 at dilution of 1:100.