

# KBTBD2 Antibody



PACO37710

---

## Product Information

**Size:**

50ug

**Reactivity:**

Human

**Source:**

Rabbit

**Isotype:**

IgG

**Applications:**

ELISA, WB

**Recommended dilutions:**

ELISA:1:2000-1:10000, WB:1:500-1:2000

**Protein Background:**

**Gene ID:**

KBTBD2

**Uniprot**

Q8IY47

**Synonyms:**

Kelch repeat and BTB domain-containing protein 2 (BTB and kelch domain-containing protein 1), KBTBD2, BKLHD1 KIAA1489

**Immunogen:**

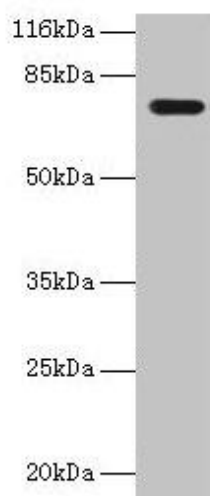
Recombinant Human Kelch repeat and BTB domain-containing protein 2 protein (182-406AA).

**Storage:**

Preservative: 0.03% Proclin 300. Constituents: 50% Glycerol, 0.01M PBS, PH 7.4

## Product Images

---



Western blot. All lanes: KBTBD2 antibody at 2 $\mu$ g/ml + A549 whole cell lysate. Secondary. Goat polyclonal to rabbit IgG at 1/10000 dilution. Predicted band size: 72 kDa. Observed band size: 72 kDa.