

CCDC103 Antibody



PACO37738

Product Information

Size:

50ug

Reactivity:

Human, Mouse

Source:

Rabbit

Isotype:

IgG

Applications:

ELISA, WB

Recommended dilutions:

ELISA:1:2000-1:10000, WB:1:1000-1:5000

Protein Background:

Dynein-attachment factor required for cilia motility.

Gene ID:

CCDC103

Uniprot

Q8IW40

Synonyms:

Coiled-coil domain-containing protein 103, CCDC103

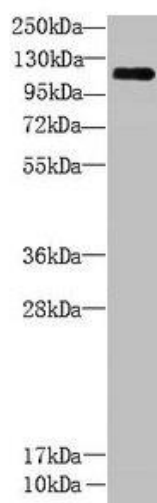
Immunogen:

Recombinant Human Coiled-coil domain-containing protein 103 protein (1-242AA).

Storage:

Preservative: 0.03% Proclin 300. Constituents: 50% Glycerol, 0.01M PBS, PH 7.4

Product Images



Western Blot. All lanes: CCDC103 antibody at 5 μ g/ml + Mouse heart tissue. Secondary. Goat polyclonal to rabbit IgG at 1/10000 dilution. Predicted band size: 28, 12 kDa. Observed band size: 111 kDa.