

# C7orf61 Antibody



PACO37798

---

## Product Information

**Size:**

50ug

**Reactivity:**

Human

**Source:**

Rabbit

**Isotype:**

IgG

**Applications:**

ELISA, IHC

**Recommended dilutions:**

ELISA:1:2000-1:10000, IHC:1:20-1:200

**Protein Background:**

**Gene ID:**

C7orf61

**Uniprot**

Q8IZ16

**Synonyms:**

Uncharacterized protein C7orf61, C7orf61

**Immunogen:**

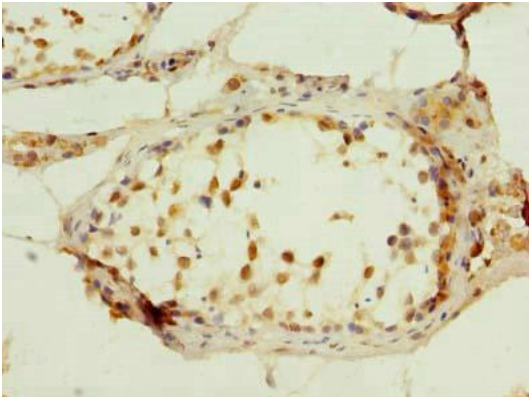
Recombinant Human Uncharacterized protein C7orf61 protein (1-206AA).

**Storage:**

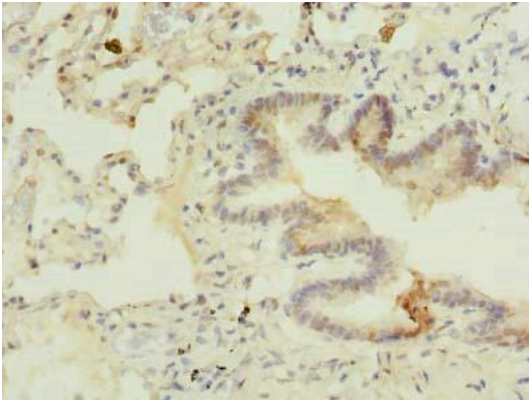
Preservative: 0.03% Proclin 300. Constituents: 50% Glycerol, 0.01M PBS, PH 7.4

## Product Images

---



Immunohistochemistry of paraffin-embedded human testis tissue using PACO37798 at dilution of 1:100.



Immunohistochemistry of paraffin-embedded human lung tissue using PACO37798 at dilution of 1:100.