

Product Information

Size:

50ug

Reactivity:

Human, Mouse

Source:

Rabbit

Isotype:

IgG

Applications:

ELISA, WB, IF

Recommended dilutions:

ELISA:1:2000-1:10000, WB:1:1000-1:5000,
IF:1:50-1:200

Protein Background:

Probable sodium-dependent amino acid, proton antiporter, could be a neuronal transporter for glutamate.

Gene ID:

SLC38A6

Uniprot

Q8IZM9

Synonyms:

Probable sodium-coupled neutral amino acid, transporter 6 (N-system amino acid, transporter 1) (NAT-1) (Na(+)-coupled neutral amino acid, transporter 6) (Solute carrier family 38 member 6), SLC38A6, NAT1 SNAT6

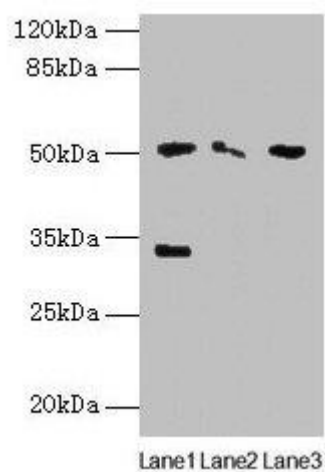
Immunogen:

Recombinant Human Probable sodium-coupled neutral amino acid, transporter 6 protein (132-169AA).

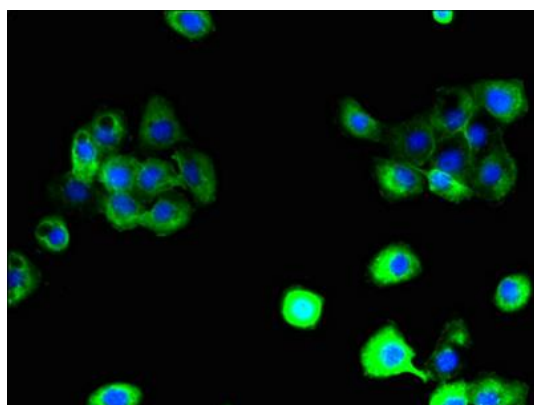
Storage:

Preservative: 0.03% Proclin 300. Constituents: 50% Glycerol, 0.01M PBS, PH 7.4

Product Images



Western blot. All lanes: SLC38A6 antibody at 12 μ g/ml. Lane 1: Mouse kidney tissue. Lane 2: Mouse thymus tissue. Lane 3: U87 whole cell lysate. Secondary. Goat polyclonal to rabbit IgG at 1/10000 dilution. Predicted band size: 51, 58 kDa. Observed band size: 51, 33 kDa.



Immunofluorescent analysis of A431 cells using PACO37902 at dilution of 1:100 and Alexa Fluor 488-conjugated AffiniPure Goat Anti-Rabbit IgG(H+L).