

SVOPL Antibody



PACO37926

Product Information

Size:

50ug

Reactivity:

Human, Mouse, Rat

Source:

Rabbit

Isotype:

IgG

Applications:

ELISA, WB, IF

Recommended dilutions:

ELISA:1:2000-1:10000, WB:1:1000-1:5000,
IF:1:50-1:200

Protein Background:

Gene ID:

SVOPL

Uniprot

Q8N434

Synonyms:

Putative transporter SVOPL (SV2-related protein-like) (SVOP-like protein), SVOPL

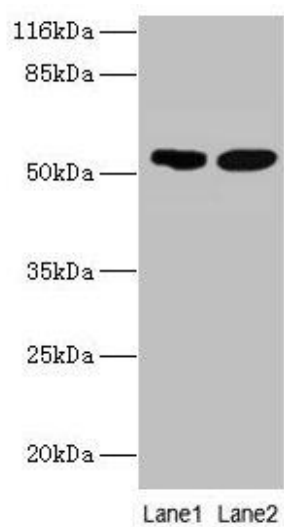
Immunogen:

Recombinant Human Putative transporter SVOPL protein (73-129AA).

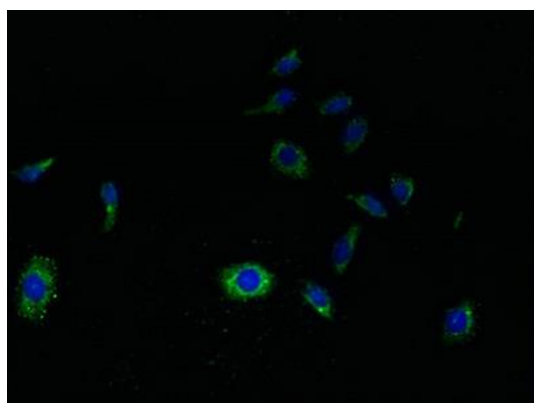
Storage:

Preservative: 0.03% Proclin 300. Constituents: 50% Glycerol, 0.01M PBS, PH 7.4

Product Images



Western blot. All lanes: SVOPL antibody at 2 μ g/ml. Lane 1: Mouse liver tissue. Lane 2: Rat liver tissue. Secondary: Goat polyclonal to rabbit IgG at 1/10000 dilution. Predicted band size: 54, 37 kDa. Observed band size: 54 kDa.



Immunofluorescent analysis of HepG2 cells using PACO37926 at dilution of 1:100 and Alexa Fluor 488-conjugated AffiniPure Goat Anti-Rabbit IgG(H+L).