
Product Information

Size:

50ug

Reactivity:

Human, Mouse

Source:

Rabbit

Isotype:

IgG

Applications:

ELISA, WB, IHC

Recommended dilutions:

ELISA:1:2000-1:10000, WB:1:500-1:5000,
IHC:1:20-1:200

Protein Background:

Controls the development of red pulp macrophages required for red blood cells recycling and iron homeostasis. Transcription factor that binds to the PU-box, a purine-rich DNA sequence (5'-GAGGA[AT]-3') that can act as a lymphoid-specific enhancer. Regulates VCAM1 gene expression.

Gene ID:

SPIC

Uniprot

Q8N5J4

Synonyms:

Transcription factor Spi-C, SPIC

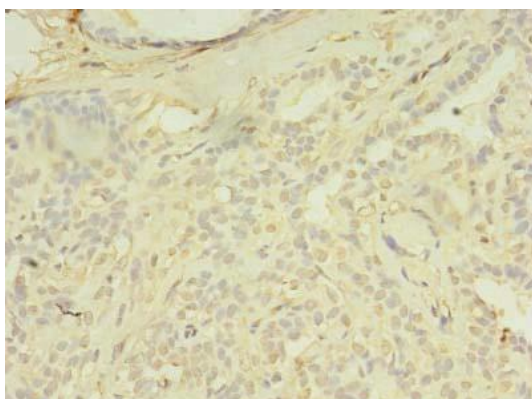
Immunogen:

Recombinant Human Transcription factor Spi-C protein (1-248AA).

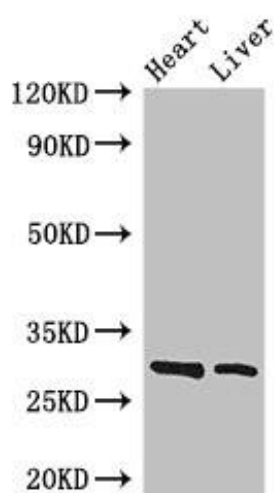
Storage:

Preservative: 0.03% Proclin 300. Constituents: 50% Glycerol, 0.01M PBS, PH 7.4

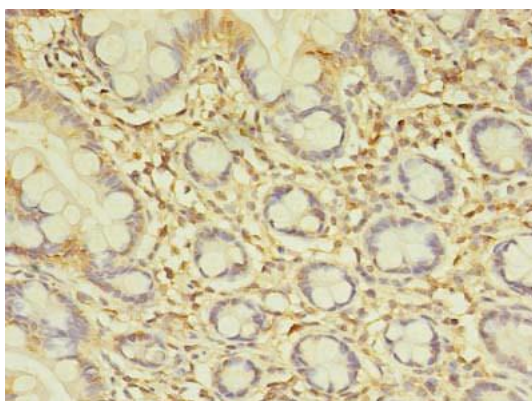
Product Images



Immunohistochemistry of paraffin-embedded human breast cancer using PACO37934 at dilution of 1:100.



Western Blot. Positive WB detected in: Mouse heart tissue, Mouse liver tissue. All lanes: SPIC antibody at 3.4 μ g/ml. Secondary. Goat polyclonal to rabbit IgG at 1/50000 dilution. Predicted band size: 30 kDa. Observed band size: 30 kDa.



Immunohistochemistry of paraffin-embedded human small intestine tissue using PACO37934 at dilution of 1:100.