

# PI4KAP1 Antibody



PACO37958

---

## Product Information

**Size:**

50ug

**Reactivity:**

Human, Mouse

**Source:**

Rabbit

**Isotype:**

IgG

**Applications:**

ELISA, WB

**Recommended dilutions:**

ELISA:1:2000-1:10000, WB:1:1000-1:5000

**Protein Background:**

**Gene ID:**

PI4KAP1

**Uniprot**

Q8N8J0

**Synonyms:**

Putative inactive phosphatidylinositol 4-kinase alpha-like protein P1, PI4KAP1

**Immunogen:**

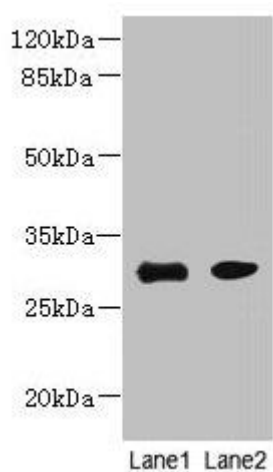
Recombinant Human Putative inactive phosphatidylinositol 4-kinase alpha-like protein P1 protein (1-262AA).

**Storage:**

Preservative: 0.03% Proclin 300. Constituents: 50% Glycerol, 0.01M PBS, PH 7.4

## Product Images

---



Western blot. All lanes: PI4KAP1 antibody at 10 $\mu$ g/ml. Lane 1: Mouse gonadal tissue. Lane 2: 293T whole cell lysate. Secondary. Goat polyclonal to rabbit IgG at 1/10000 dilution. Predicted band size: 30 kDa. Observed band size: 30 kDa.