

C3orf20 Antibody



PACO37978

Product Information

Size:

50ug

Reactivity:

Human

Source:

Rabbit

Isotype:

IgG

Applications:

ELISA, IF

Recommended dilutions:

ELISA:1:2000-1:10000, IF:1:50-1:200

Protein Background:

cytoplasm.

Gene ID:

C3orf20

Uniprot

Q8ND61

Synonyms:

Uncharacterized protein C3orf20, C3orf20

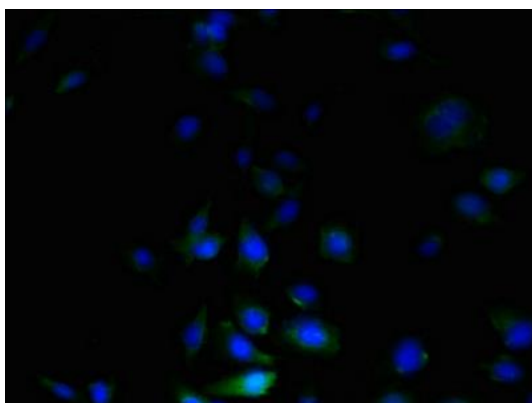
Immunogen:

Recombinant Human Uncharacterized protein C3orf20 protein (239-493AA).

Storage:

Preservative: 0.03% Proclin 300. Constituents: 50% Glycerol, 0.01M PBS, PH 7.4

Product Images



Immunofluorescent analysis of U251 cells using PACO37978 at dilution of 1:100 and Alexa Fluor 488-conjugated AffiniPure Goat Anti-Rabbit IgG(H+L).