

CCDC112 Antibody



PACO37982

Product Information

Size:

50ug

Reactivity:

Human

Source:

Rabbit

Isotype:

IgG

Applications:

ELISA, WB, IHC, IF

Recommended dilutions:

ELISA:1:2000-1:10000, WB:1:500-1:2000,
IHC:1:20-1:200, IF:1:50-1:200

Protein Background:

Gene ID:

CCDC112

Uniprot

Q8NEF3

Synonyms:

Coiled-coil domain-containing protein 112 (Mutated in bladder cancer protein 1),
CCDC112, MBC1

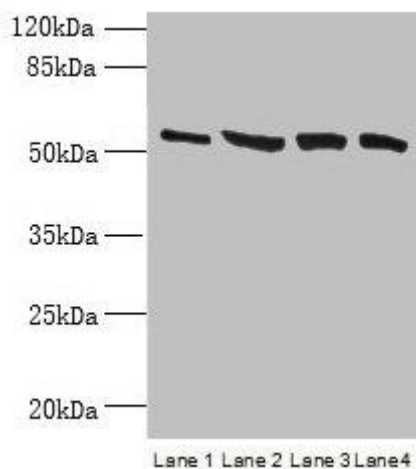
Immunogen:

Recombinant Human Coiled-coil domain-containing protein 112 protein (201-446AA).

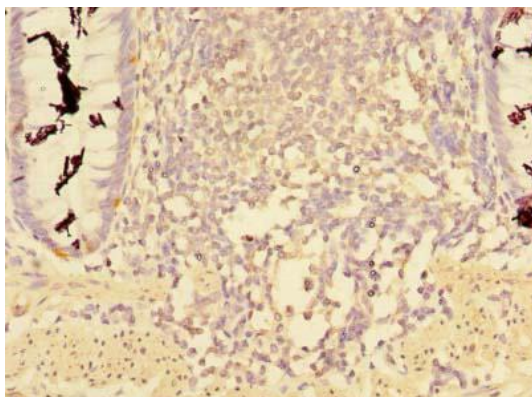
Storage:

Preservative: 0.03% Proclin 300. Constituents: 50% Glycerol, 0.01M PBS, PH 7.4

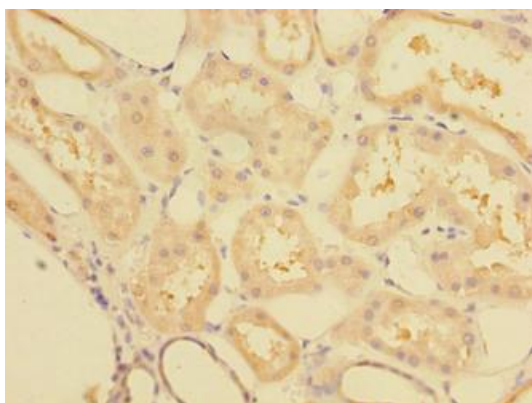
Product Images



Western blot. All lanes: CCDC112 antibody at 12 μ g/ml. Lane 1: Jurkat whole cell lysate. Lane 2: Hela whole cell lysate. Lane 3: HepG2 whole cell lysate. Lane 4: A549 whole cell lysate. Secondary: Goat polyclonal to rabbit IgG at 1/10000 dilution. Predicted band size: 54, 62 kDa. Observed band size: 54 kDa.



Immunohistochemistry of paraffin-embedded human colon tissue using PACO37982 at dilution of 1:100.



Immunohistochemistry of paraffin-embedded human kidney tissue using PACO37982 at dilution of 1:100.