

CD300LF Antibody



PACO38034

Product Information

Size:

50ug

Reactivity:

Human

Source:

Rabbit

Isotype:

IgG

Applications:

ELISA, IHC

Recommended dilutions:

ELISA:1:2000-1:10000, IHC:1:20-1:200

Protein Background:

Acts as an inhibitory receptor for myeloid cells and mast cells. Inhibits osteoclast formation.

Gene ID:

CD300LF

Uniprot

Q8TDQ1

Synonyms:

CMRF35-like molecule 1 (CLM-1) (CD300 antigen-like family member F) (Immune receptor expressed on myeloid cells 1) (IREM-1) (Immunoglobulin superfamily member 13) (IgSF13) (NK inhibitory receptor) (CD antigen CD300f), CD300LF, CD300F CLM1 IGSF13 IREM1 NKIR

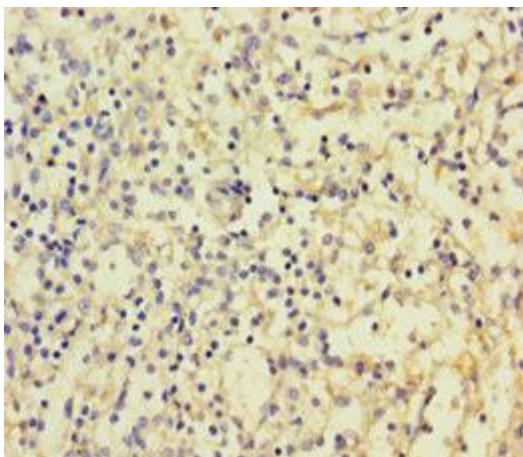
Immunogen:

Recombinant Human CMRF35-like molecule 1 protein (20-156AA).

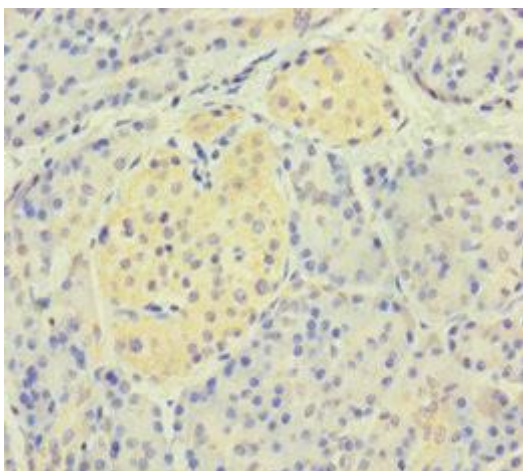
Storage:

Preservative: 0.03% Proclin 300. Constituents: 50% Glycerol, 0.01M PBS, PH 7.4

Product Images



Immunohistochemistry of paraffin-embedded human spleen tissue using PACO38034 at dilution of 1:100.



Immunohistochemistry of paraffin-embedded human pancreatic tissue using PACO38034 at dilution of 1:100.