

Product Information

Size:

50ug

Reactivity:

Human

Source:

Rabbit

Isotype:

IgG

Applications:

ELISA, IHC

Recommended dilutions:

ELISA:1:2000-1:10000, IHC:1:20-1:200

Protein Background:

Guanine nucleotide exchange factor (GEF) for RAP1A, RAP2A and MRAS/M-Ras-GTP. Its association with MRAS inhibits Rap1 activation.

Gene ID:

RAPGEF5

Uniprot

Q92565

Synonyms:

Rap guanine nucleotide exchange factor 5 (Guanine nucleotide exchange factor for Rap1) (M-Ras-regulated Rap GEF) (MR-GEF) (Related to Epac) (Repac), RAPGEF5, GFR KIAA0277 MRGEF

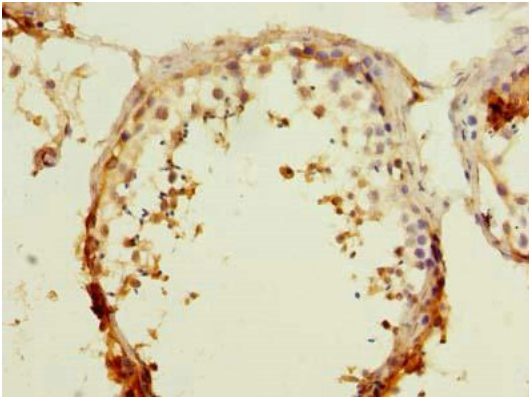
Immunogen:

Recombinant Human Rap guanine nucleotide exchange factor 5 protein (201-444AA).

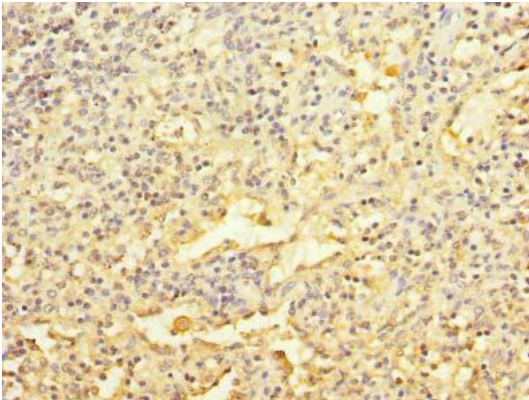
Storage:

Preservative: 0.03% Proclin 300. Constituents: 50% Glycerol, 0.01M PBS, PH 7.4

Product Images



Immunohistochemistry of paraffin-embedded human testis tissue using PACO38086 at dilution of 1:100.



Immunohistochemistry of paraffin-embedded human spleen tissue using PACO38086 at dilution of 1:100.