

---

## Product Information

**Size:**

50ug

**Reactivity:**

Human

**Source:**

Rabbit

**Isotype:**

IgG

**Applications:**

ELISA, IHC, IF

**Recommended dilutions:**

ELISA:1:2000-1:10000, IHC:1:20-1:200,  
IF:1:50-1:200

**Protein Background:**

May be involved in vesicular trafficking. Plays a role in synapse formation. May regulate the homeostasis of SNCA/alpha-synuclein. Together with PICK1 proposed to ensure selectively GRIA2 exit from the endoplasmic reticulum to the Golgi and to regulate AMPAR composition at the post-synapses and thus synaptic transmission.

**Gene ID:**

RAB39B

**Uniprot**

Q96DA2

**Synonyms:**

Ras-related protein Rab-39B, RAB39B

**Immunogen:**

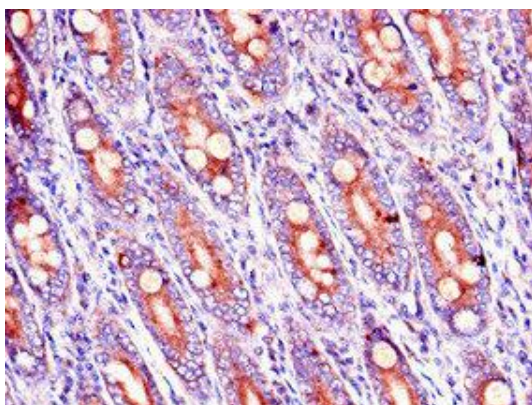
Recombinant Human Ras-related protein Rab-39B protein (1-213AA).

**Storage:**

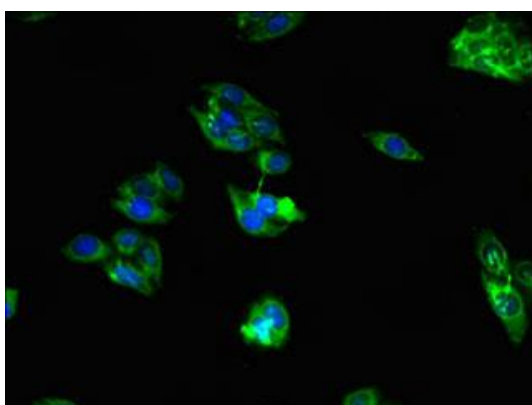
Preservative: 0.03% Proclin 300. Constituents: 50% Glycerol, 0.01M PBS, PH 7.4

## Product Images

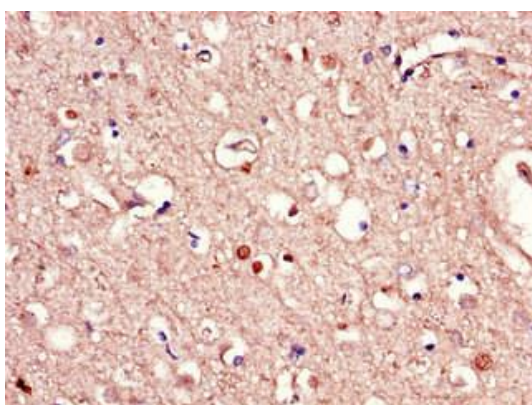
---



Immunohistochemistry of paraffin-embedded human small intestine tissue using PACO38130 at dilution of 1:100.



Immunofluorescent analysis of HepG2 cells using PACO38130 at dilution of 1:100 and Alexa Fluor 488-conjugated AffiniPure Goat Anti-Rabbit IgG(H+L).



Immunohistochemistry of paraffin-embedded human brain tissue using PACO38130 at dilution of 1:100.