

LIX1 Antibody



PACO38250

Product Information

Size:

50ug

Reactivity:

Human, Mouse

Source:

Rabbit

Isotype:

IgG

Applications:

ELISA, WB, IHC, IF

Recommended dilutions:

ELISA:1:2000-1:10000, WB:1:500-1:2000,
IHC:1:20-1:200, IF:1:10-1:100

Protein Background:

cytoplasm, autophagosome maturation, autophagy.

Gene ID:

LIX1

Uniprot

Q8N485

Synonyms:

Protein limb expression 1 homolog, LIX1, C5orf11

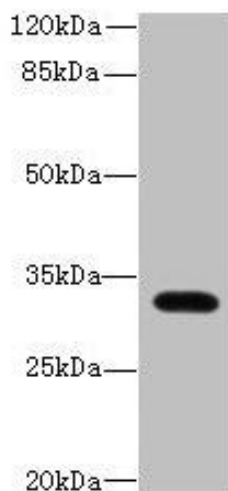
Immunogen:

Recombinant Human Protein limb expression 1 homolog protein (1-282AA).

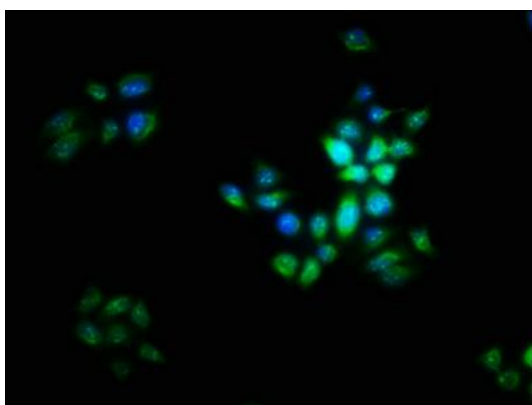
Storage:

Preservative: 0.03% Proclin 300. Constituents: 50% Glycerol, 0.01M PBS, PH 7.4

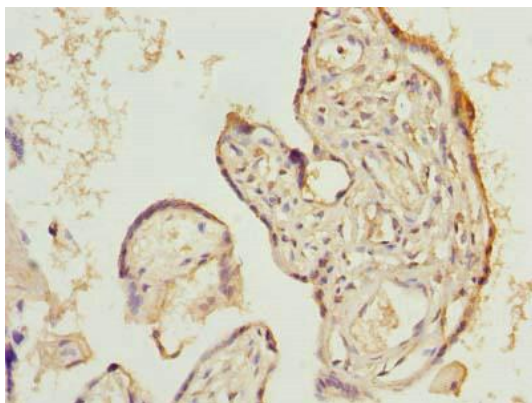
Product Images



Western blot. All lanes: LIX1 antibody at 0.5 μ g/ml + Mouse heart tissue. Secondary. Goat polyclonal to rabbit IgG at 1/10000 dilution. Predicted band size: 32 kDa. Observed band size: 32 kDa.



Immunofluorescence staining of PC-3 cells with PACO38250 at 1:16, counter-stained with DAPI. The cells were fixed in 4% formaldehyde, permeabilized using 0.2% Triton X-100 and blocked in 10% normal Goat Serum. The cells were then incubated with the antibody overnight at 4°C. The secondary antibody was Alexa Fluor 488-conjugated AffiniPure Goat Anti-Rabbit IgG(H+L).



Immunohistochemistry of paraffin-embedded human placenta tissue using PACO38250 at dilution of 1:100.