

IL22RA1 Antibody



PACO38274

Product Information

Size:

50ug

Reactivity:

Human

Source:

Rabbit

Isotype:

IgG

Applications:

ELISA, IHC, IF

Recommended dilutions:

ELISA:1:2000-1:10000, IHC:1:20-1:200,
IF:1:50-1:500

Protein Background:

Component of the receptor for IL20, IL22 and IL24. Component of IL22 receptor formed by IL22RA1 and IL10RB enabling IL22 signaling via JAK/STAT pathways. IL22 also induces activation of MAPK1/MAPK3 and Akt kinases pathways. Component of one of the receptor for IL20 and IL24 formed by IL22RA1 and IL20RB also signaling through STATs activation. Mediates IL24 antiangiogenic activity as well as IL24 inhibitory effect on endothelial cell tube formation and differentiation.

Gene ID:

IL22RA1

Uniprot

Q8N6P7

Synonyms:

Interleukin-22 receptor subunit alpha-1 (IL-22 receptor subunit alpha-1) (IL-22R-alpha-1) (IL-22RA1) (Cytokine receptor class-II member 9) (Cytokine receptor family 2 member 9) (CRF2-9) (ZcytoR11), IL22RA1, IL22R

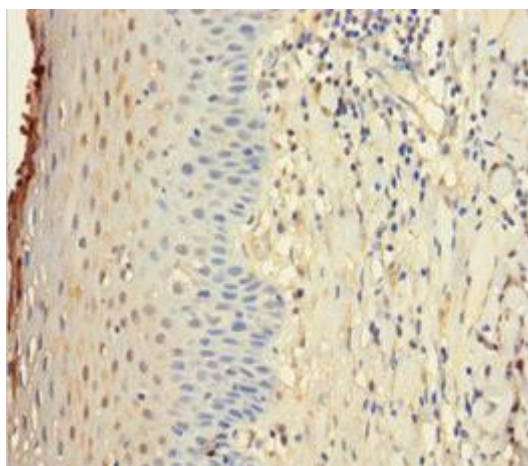
Immunogen:

Recombinant Human Interleukin-22 receptor subunit alpha-1 protein (250-573AA).

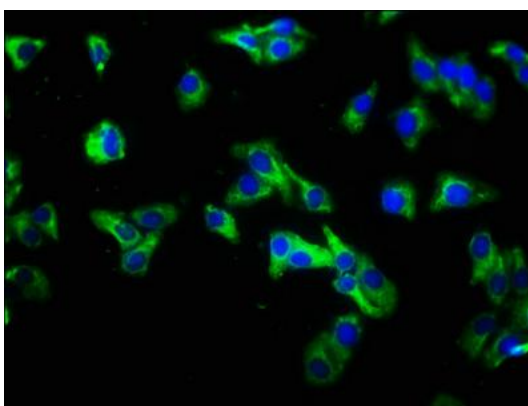
Storage:

Preservative: 0.03% Proclin 300. Constituents: 50% Glycerol, 0.01M PBS, PH 7.4

Product Images



Immunohistochemistry of paraffin-embedded human tonsil tissue using PACO38274 at dilution of 1:100.



Immunofluorescence staining of HepG2 cells with PACO38274 at 1:333, counter-stained with DAPI. The cells were fixed in 4% formaldehyde, permeabilized using 0.2% Triton X-100 and blocked in 10% normal Goat Serum. The cells were then incubated with the antibody overnight at 4°C. The secondary antibody was Alexa Fluor 488-conjugated AffiniPure Goat Anti-Rabbit IgG(H+L).