

# C4orf3 Antibody



PACO38378

---

## Product Information

**Size:**

50ug

**Reactivity:**

Human

**Source:**

Rabbit

**Isotype:**

IgG

**Applications:**

ELISA, WB

**Recommended dilutions:**

ELISA:1:2000-1:10000, WB:1:1000-1:5000

**Protein Background:**

**Gene ID:**

C4orf3

**Uniprot**

Q8WVX3

**Synonyms:**

Uncharacterized protein C4orf3 (Hepatitis C virus F protein-transactivated protein 1) (HCV F-transactivated protein 1), C4orf3

**Immunogen:**

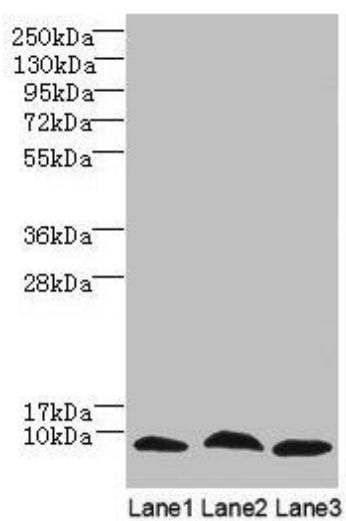
Recombinant Human Uncharacterized protein C4orf3 protein (1-44AA).

**Storage:**

Preservative: 0.03% Proclin 300. Constituents: 50% Glycerol, 0.01M PBS, PH 7.4

## Product Images

---



Western Blot. All lanes: C4orf3 antibody at 6 $\mu$ g/ml. Lane 1: 293T whole cell lysate. Lane 2: Hela whole cell lysate. Lane 3: HepG2 whole cell lysate. Secondary: Goat polyclonal to rabbit IgG at 1/10000 dilution. Predicted band size: 8, 23 kDa. Observed band size: 8 kDa.