

LSM10 Antibody



PACO38402

Product Information

Size:

50ug

Reactivity:

Human

Source:

Rabbit

Isotype:

IgG

Applications:

ELISA, IHC

Recommended dilutions:

ELISA:1:2000-1:10000, IHC:1:20-1:200

Protein Background:

Gene ID:

LSM10

Uniprot

Q969L4

Synonyms:

U7 snRNA-associated Sm-like protein LSm10, LSM10

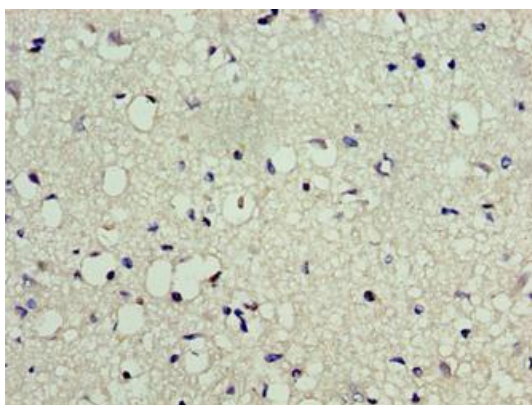
Immunogen:

Recombinant Human U7 snRNA-associated Sm-like protein LSm10 protein (1-123AA).

Storage:

Preservative: 0.03% Proclin 300. Constituents: 50% Glycerol, 0.01M PBS, PH 7.4

Product Images



Immunohistochemistry of paraffin-embedded human brain tissue using PACO38402 at dilution of 1:100.