

PACO38418

Product Information

Size:

50ug

Reactivity:

Human, Mouse

Source:

Rabbit

Isotype:

IgG

Applications:

ELISA, WB, IHC

Recommended dilutions:

ELISA:1:2000-1:10000, WB:1:1000-1:5000,
IHC:1:20-1:200

Protein Background:

Member of the repulsive guidance molecule (RGM) family that performs several functions in the developing and adult nervous system. Regulates cephalic neural tube closure, inhibits neurite outgrowth and cortical neuron branching, and the formation of mature synapses. Binding to its receptor NEO1/neogenin induces activation of RHOA-ROCK1/Rho-kinase signaling pathway through UNC5B-ARHGEF12/LARG-PTK2/FAK1 cascade, leading to collapse of the neuronal growth cone and neurite outgrowth inhibition. Furthermore, RGMA binding to NEO1/neogenin leads to HRAS inactivation by influencing HRAS-PTK2/FAK1-AKT1 pathway. It also functions as a bone morphogenetic protein (BMP) coreceptor that may signal through SMAD1, SMAD5, and SMAD8.

Gene ID:

RGMA

Uniprot

Q96B86

Synonyms:

Repulsive guidance molecule A (RGM domain family member A), RGMA, RGM

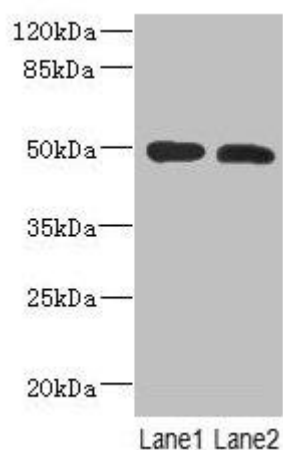
Immunogen:

Recombinant Human Repulsive guidance molecule A protein (153-408AA).

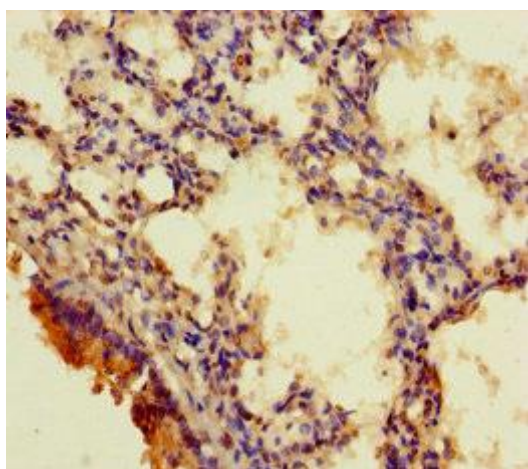
Storage:

Preservative: 0.03% Proclin 300. Constituents: 50% Glycerol, 0.01M PBS, PH 7.4

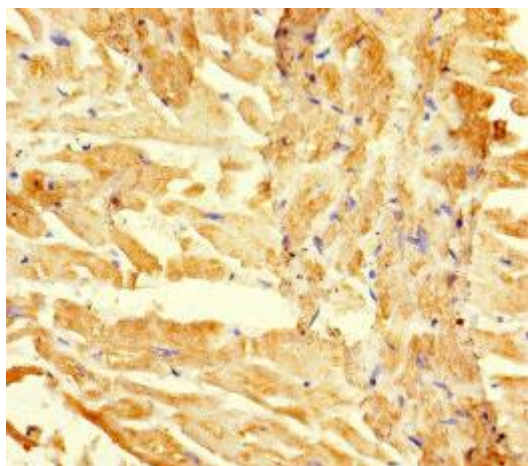
Product Images



Western Blot. All lanes: RGMA antibody at 12 μ g/ml. Lane 1: Mouse brain tissue. Lane 2: Hela whole cell lysate. Secondary: Goat polyclonal to rabbit IgG at 1/10000 dilution. Predicted band size: 50, 48, 51 kDa. Observed band size: 50 kDa.



Immunohistochemistry of paraffin-embedded human lung tissue using PACO38418 at dilution of 1:100.



Immunohistochemistry of paraffin-embedded human heart tissue using PACO38418 at dilution of 1:100.