

# L3MBTL4 Antibody



PACO38562

---

## Product Information

**Size:**

50ug

**Reactivity:**

Human, Rat

**Source:**

Rabbit

**Isotype:**

IgG

**Applications:**

ELISA, WB, IHC

**Recommended dilutions:**

ELISA:1:2000-1:10000, WB:1:500-1:5000,  
IHC:1:20-1:200

**Protein Background:**

Putative Polycomb group (PcG) protein. PcG proteins maintain the transcriptionally repressive state of genes, probably via a modification of chromatin, rendering it heritably changed in its expressibility.

**Gene ID:**

L3MBTL4

**Uniprot**

Q8NA19

**Synonyms:**

Lethal(3)malignant brain tumor-like protein 4 (H-l(3)mbt-like protein 4) (L(3)mbt-like protein 4) (L3mbt-like 4), L3MBTL4

**Immunogen:**

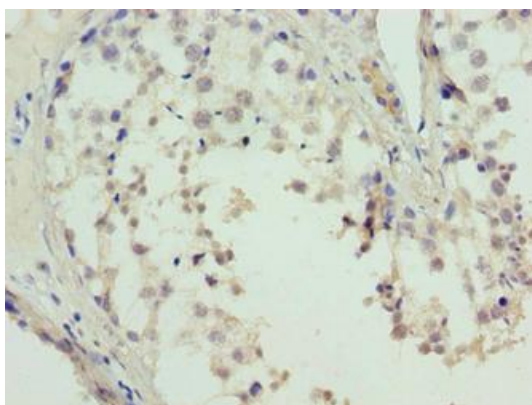
Recombinant Human Lethal(3)malignant brain tumor-like protein 4 protein (1-270AA).

**Storage:**

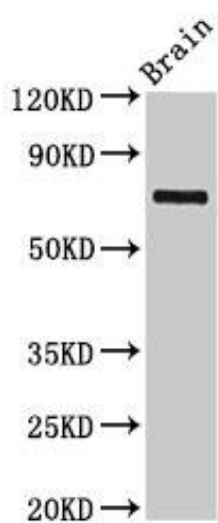
Preservative: 0.03% Proclin 300. Constituents: 50% Glycerol, 0.01M PBS, PH 7.4

## Product Images

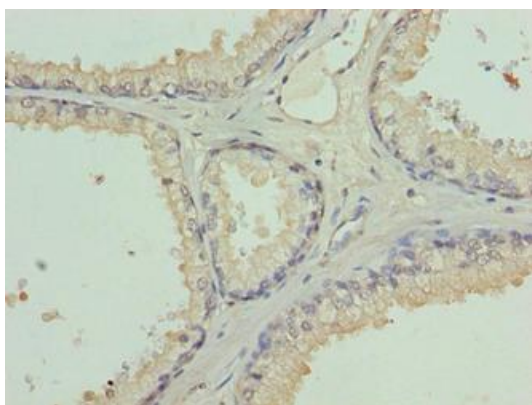
---



Immunohistochemistry of paraffin-embedded human testis tissue using PACO38562 at dilution of 1:100.



Western Blot. Positive WB detected in: Rat brain tissue. All lanes: L3MBTL4 antibody at 3 $\mu$ g/ml. Secondary. Goat polyclonal to rabbit IgG at 1/50000 dilution. Predicted band size: 72, 62 kDa. Observed band size: 72 kDa.



Immunohistochemistry of paraffin-embedded human prostate cancer using PACO38562 at dilution of 1:100.