

C10orf82 Antibody



PACO38638

Product Information

Size:

50ug

Reactivity:

Human, Mouse

Source:

Rabbit

Isotype:

IgG

Applications:

ELISA, WB, IHC

Recommended dilutions:

ELISA:1:2000-1:10000, WB:1:1000-1:5000,
IHC:1:20-1:200

Protein Background:

Gene ID:

C10orf82

Uniprot

Q8WW14

Synonyms:

Uncharacterized protein C10orf82, C10orf82

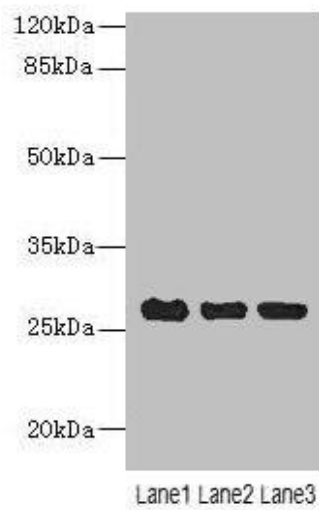
Immunogen:

Recombinant Human Uncharacterized protein C10orf82 protein (1-154AA).

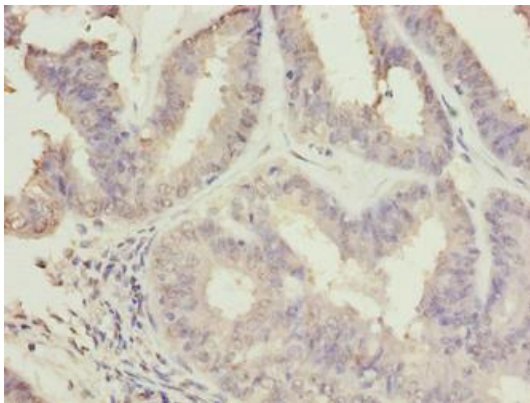
Storage:

Preservative: 0.03% Proclin 300. Constituents: 50% Glycerol, 0.01M PBS, PH 7.4

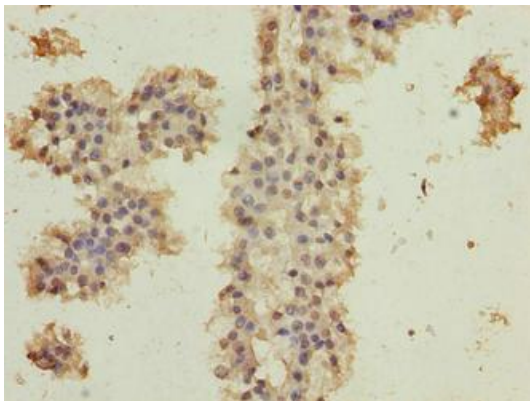
Product Images



Western blot. All lanes: C10orf82 antibody at 1 μ g/ml. Lane 1: A431 whole cell lysate. Lane 2: HepG2 whole cell lysate. Lane 3: Mouse thymus tissue. Secondary: Goat polyclonal to rabbit IgG at 1/10000 dilution. Predicted band size: 27, 18, 13 kDa. Observed band size: 27 kDa.



Immunohistochemistry of paraffin-embedded human endometrial cancer using PACO38638 at dilution of 1:100.



Immunohistochemistry of paraffin-embedded human breast cancer using PACO38638 at dilution of 1:100.