

## Product Information

**Size:**

50ug

**Reactivity:**

Human

**Source:**

Rabbit

**Isotype:**

IgG

**Applications:**

ELISA, IHC

**Recommended dilutions:**

ELISA:1:2000-1:10000, IHC:1:20-1:200

**Protein Background:**

Part of an E3 ubiquitin ligase complex for neddylation. Required for neddylation of cullin components of E3 cullin-RING ubiquitin ligase complexes by enhancing the rate of cullins neddylation. Functions to recruit the NEDD8-charged E2 enzyme to the cullin component. Involved in the release of inhibitory effects of CAND1 on cullin-RING ligase E3 complex assembly and activity. Acts also as an oncogene facilitating malignant transformation and carcinogenic progression.

**Gene ID:**

DCUN1D1

**Uniprot**

Q96GG9

**Synonyms:**

DCN1-like protein 1 (DCUN1 domain-containing protein 1) (Defective in cullin neddylation protein 1-like protein 1) (Squamous cell carcinoma-related oncogene), DCUN1D1, DCUN1L1 RP42 SCCRO

**Immunogen:**

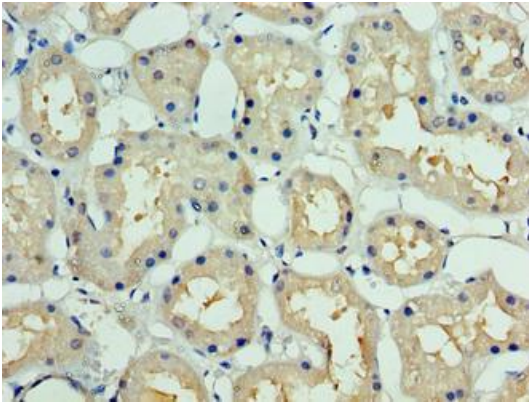
Recombinant Human DCN1-like protein 1 protein (1-259AA).

**Storage:**

Preservative: 0.03% Proclin 300. Constituents: 50% Glycerol, 0.01M PBS, PH 7.4

## Product Images

---



Immunohistochemistry of paraffin-embedded human kidney tissue using PACO38722 at dilution of 1:100.