

SLC25A40 Antibody



PACO38830

Product Information

Size:

50ug

Reactivity:

Human

Source:

Rabbit

Isotype:

IgG

Applications:

ELISA, IHC, IF

Recommended dilutions:

ELISA:1:2000-1:10000, IHC:1:20-1:200,
IF:1:50-1:200

Protein Background:

Gene ID:

SLC25A40

Uniprot

Q8TBP6

Synonyms:

Solute carrier family 25 member 40 (Mitochondrial carrier family protein), SLC25A40, MCFP

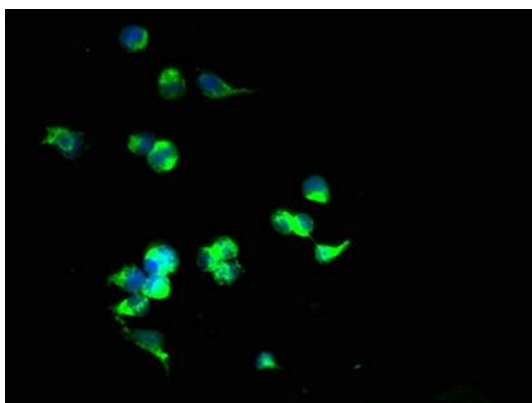
Immunogen:

Recombinant Human Solute carrier family 25 member 40 protein (40-102AA).

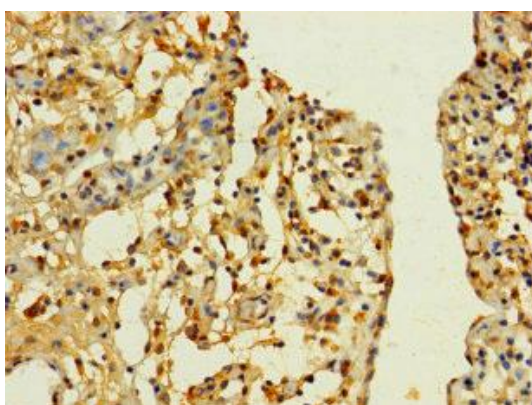
Storage:

Preservative: 0.03% Proclin 300. Constituents: 50% Glycerol, 0.01M PBS, PH 7.4

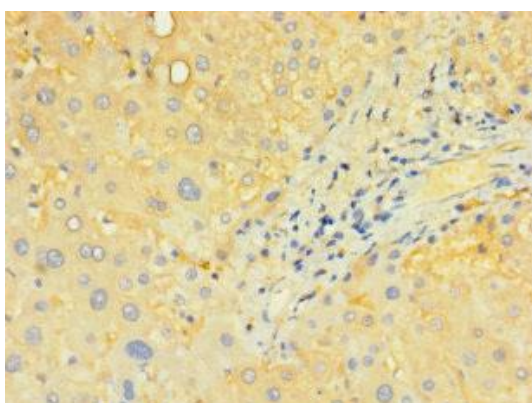
Product Images



Immunofluorescent analysis of 293T cells using PACO38830 at dilution of 1:100 and Alexa Fluor 488-conjugated AffiniPure Goat Anti-Rabbit IgG(H+L).



Immunohistochemistry of paraffin-embedded human bladder cancer using PACO38830 at dilution of 1:100.



Immunohistochemistry of paraffin-embedded human liver tissue using PACO38830 at dilution of 1:100.