

# SCFD2 Antibody



PACO38858

---

## Product Information

**Size:**

50ug

**Reactivity:**

Human

**Source:**

Rabbit

**Isotype:**

IgG

**Applications:**

ELISA, IHC

**Recommended dilutions:**

ELISA:1:2000-1:10000, IHC:1:20-1:200

**Protein Background:**

May be involved in protein transport.

**Gene ID:**

SCFD2

**Uniprot**

Q8WU76

**Synonyms:**

Sec1 family domain-containing protein 2 (Syntaxin-binding protein 1-like 1), SCFD2, STXBP1L1

**Immunogen:**

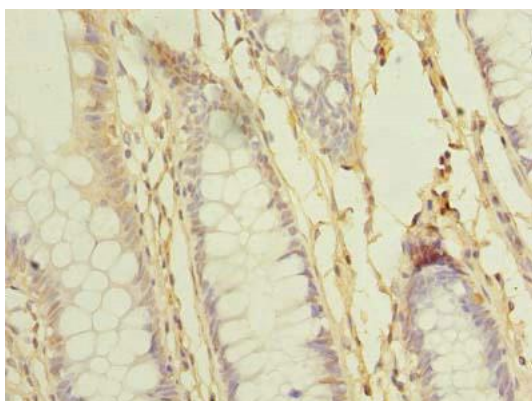
Recombinant Human Sec1 family domain-containing protein 2 protein (255-470AA).

**Storage:**

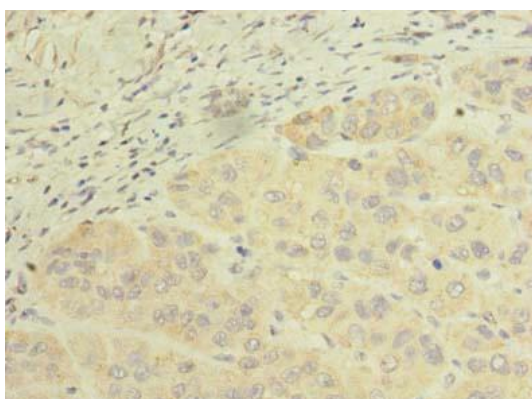
Preservative: 0.03% Proclin 300. Constituents: 50% Glycerol, 0.01M PBS, PH 7.4

## Product Images

---



Immunohistochemistry of paraffin-embedded human colon cancer using PACO38858 at dilution of 1:100.



Immunohistochemistry of paraffin-embedded human liver cancer using PACO38858 at dilution of 1:100.