

SLC35F5 Antibody



PACO38862

Product Information

Size:

50ug

Reactivity:

Human

Source:

Rabbit

Isotype:

IgG

Applications:

ELISA, WB, IHC, IF

Recommended dilutions:

ELISA:1:2000-1:10000, WB:1:500-1:2000,
IHC:1:20-1:200, IF:1:50-1:200

Protein Background:

Putative solute transporter.

Gene ID:

SLC35F5

Uniprot

Q8WV83

Synonyms:

Solute carrier family 35 member F5 (Hepatitis C virus NS5A-transactivated protein 3) (HCV NS5A-transactivated protein 3), SLC35F5, NS5ATP3

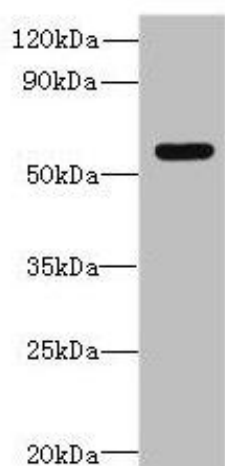
Immunogen:

Recombinant Human Solute carrier family 35 member F5 protein (122-242AA).

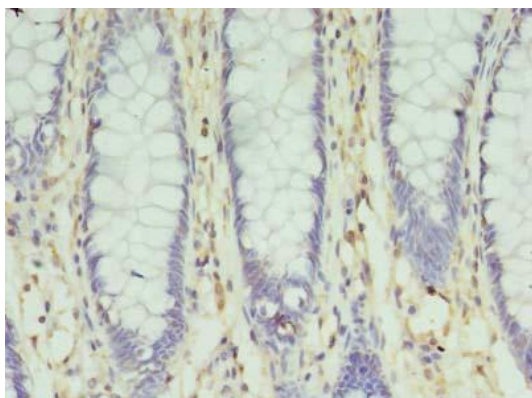
Storage:

Preservative: 0.03% Proclin 300. Constituents: 50% Glycerol, 0.01M PBS, PH 7.4

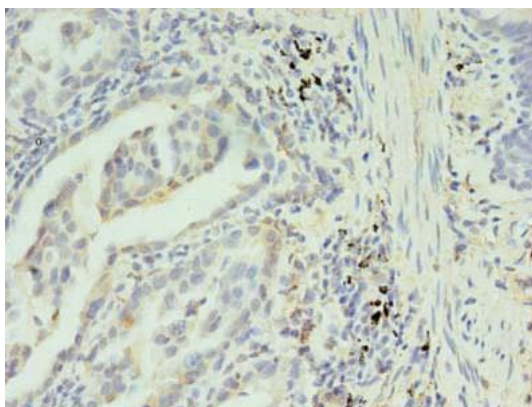
Product Images



Western blot. All lanes: SLC35F5 antibody at 6 μ g/ml + Hela whole cell lysate. Secondary. Goat polyclonal to rabbit IgG at 1/10000 dilution. Predicted band size: 59, 28 kDa. Observed band size: 59 kDa.



Immunohistochemistry of paraffin-embedded human colon cancer using PACO38862 at dilution of 1:100.



Immunohistochemistry of paraffin-embedded human lung cancer using PACO38862 at dilution of 1:100.