

# DOCK10 Antibody



PACO38942

---

## Product Information

**Size:**

50ug

**Reactivity:**

Human

**Source:**

Rabbit

**Isotype:**

IgG

**Applications:**

ELISA, IHC

**Recommended dilutions:**

ELISA:1:2000-1:10000, IHC:1:20-1:200

**Protein Background:**

Potential guanine nucleotide exchange factor (GEF). GEF proteins activate some small GTPases by exchanging bound GDP for free GTP.

**Gene ID:**

DOCK10

**Uniprot**

Q96BY6

**Synonyms:**

Dedicator of cytokinesis protein 10 (Zizimin-3), DOCK10, KIAA0694 ZIZ3

**Immunogen:**

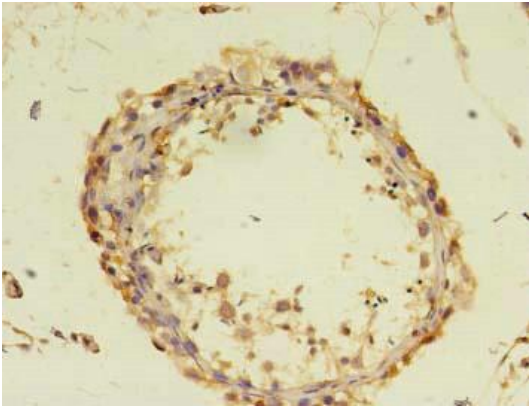
Recombinant Human Dedicator of cytokinesis protein 10 protein (1645-2186AA).

**Storage:**

Preservative: 0.03% Proclin 300. Constituents: 50% Glycerol, 0.01M PBS, PH 7.4

## Product Images

---



Immunohistochemistry of paraffin-embedded human testis tissue using PACO38942 at dilution of 1:100.