

PACO38962

Product Information

Size:

50ug

Reactivity:

Human

Source:

Rabbit

Isotype:

IgG

Applications:

ELISA, IHC

Recommended dilutions:

ELISA:1:2000-1:10000, IHC:1:20-1:200

Protein Background:

Gene ID:

CMTM5

Uniprot

Q96DZ9

Synonyms:

CKLF-like MARVEL transmembrane domain-containing protein 5 (Chemokine-like factor superfamily member 5), CMTM5, CKLFSF5

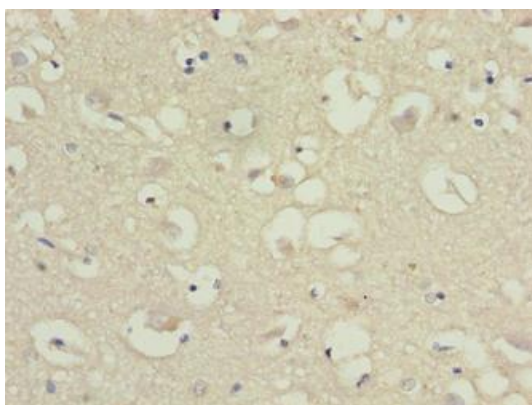
Immunogen:

Recombinant Human CKLF-like MARVEL transmembrane domain-containing protein 5 protein (1-35AA).

Storage:

Preservative: 0.03% Proclin 300. Constituents: 50% Glycerol, 0.01M PBS, PH 7.4

Product Images



Immunohistochemistry of paraffin-embedded human brain tissue using PACO38962 at dilution of 1:100.