

# SPG11 Antibody



PACO38990

---

## Product Information

**Size:**

50ug

**Reactivity:**

Human

**Source:**

Rabbit

**Isotype:**

IgG

**Applications:**

ELISA, IF

**Recommended dilutions:**

ELISA:1:2000-1:10000, IF:1:50-1:200

**Protein Background:**

cytoplasm, cytoplasmic vesicle, extracellular exosome, lysosomal membrane, nucleolus, plasma membrane.

**Gene ID:**

SPG11

**Uniprot**

Q96J17

**Synonyms:**

Spatacsin (Colorectal carcinoma-associated protein) (Spastic paraplegia 11 protein), SPG11, KIAA1840

**Immunogen:**

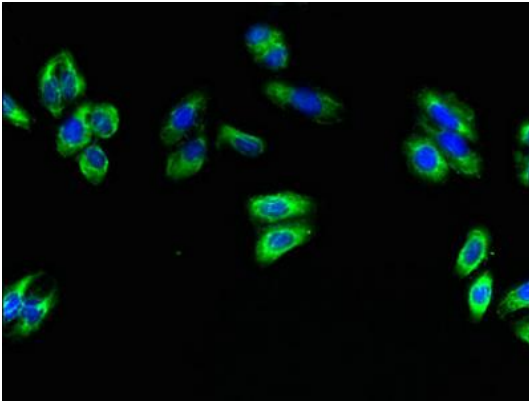
Recombinant Human Spatacsin protein (2019-2318AA).

**Storage:**

Preservative: 0.03% Proclin 300. Constituents: 50% Glycerol, 0.01M PBS, PH 7.4

## Product Images

---



Immunofluorescent analysis of HepG2 cells using PACO38990 at dilution of 1:100 and Alexa Fluor 488-conjugated AffiniPure Goat Anti-Rabbit IgG(H+L).