

# ZDHHC15 Antibody



PACO39022

---

## Product Information

**Size:**

50ug

**Reactivity:**

Human

**Source:**

Rabbit

**Isotype:**

IgG

**Applications:**

ELISA, IHC, IF

**Recommended dilutions:**

ELISA:1:2000-1:10000, IHC:1:20-1:200,  
IF:1:50-1:200

**Protein Background:**

Palmitoyltransferase specific for GAP43 and DLG4/PSD95.

**Gene ID:**

ZDHHC15

**Uniprot**

Q96MV8

**Synonyms:**

Palmitoyltransferase ZDHHC15 (EC 2.3.1.225) (Zinc finger DHHC domain-containing protein 15) (DHHC-15), ZDHHC15

**Immunogen:**

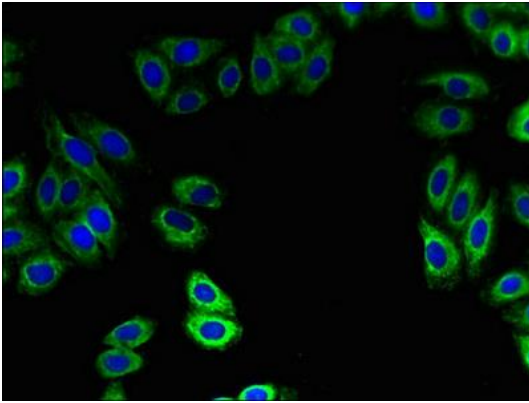
Recombinant Human Palmitoyltransferase ZDHHC15 protein (239-337AA).

**Storage:**

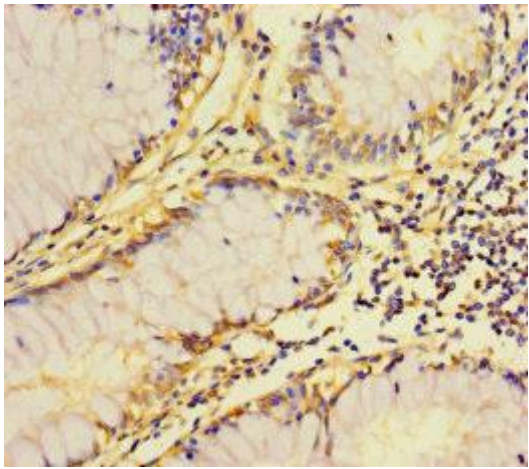
Preservative: 0.03% Proclin 300. Constituents: 50% Glycerol, 0.01M PBS, PH 7.4

## Product Images

---



Immunofluorescent analysis of HepG2 cells using PACO39022 at dilution of 1:100 and Alexa Fluor 488-conjugated AffiniPure Goat Anti-Rabbit IgG(H+L).



Immunohistochemistry of paraffin-embedded human colon cancer using PACO39022 at dilution of 1:100.