

LRRC57 Antibody



PACO39114

Product Information

Size:

50ug

Reactivity:

Human, Mouse

Source:

Rabbit

Isotype:

IgG

Applications:

ELISA, WB

Recommended dilutions:

ELISA:1:2000-1:10000, WB:1:1000-1:5000

Protein Background:

extracellular exosome.

Gene ID:

LRRC57

Uniprot

Q8N9N7

Synonyms:

Leucine-rich repeat-containing protein 57, LRRC57

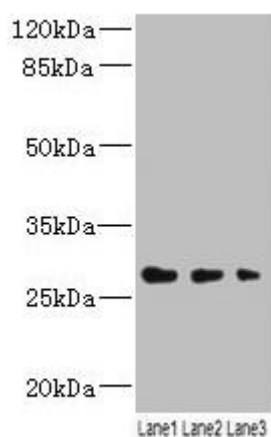
Immunogen:

Recombinant Human Leucine-rich repeat-containing protein 57 protein (1-239AA).

Storage:

Preservative: 0.03% Proclin 300. Constituents: 50% Glycerol, 0.01M PBS, PH 7.4

Product Images



Western blot. All lanes: LRRC57 antibody at 4 μ g/ml. Lane 1: Mouse liver tissue. Lane 2: Mouse kidney tissue. Lane 3: Mouse lung tissue. Secondary. Goat polyclonal to rabbit IgG at 1/10000 dilution. Predicted band size: 27 kDa. Observed band size: 27 kDa.