

Product Information

Size:

50ug

Reactivity:

Human

Source:

Rabbit

Isotype:

IgG

Applications:

ELISA, IHC

Recommended dilutions:

ELISA:1:2000-1:10000, IHC:1:20-1:200

Protein Background:

Substrate-recognition component of the SCF (SKP1-CUL1-F-box protein)-type E3 ubiquitin ligase complex.

Gene ID:

FBXO15

Uniprot

Q8NCQ5

Synonyms:

F-box only protein 15, FBXO15, FBX15

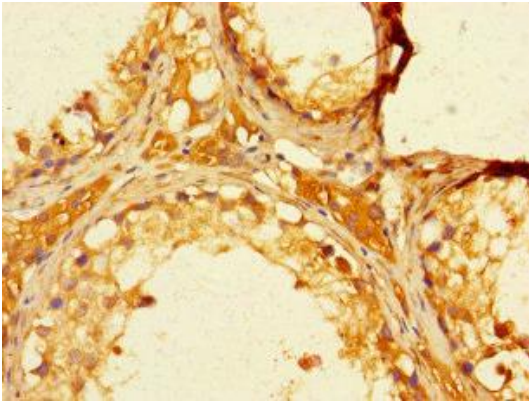
Immunogen:

Recombinant Human F-box only protein 15 protein (201-434AA).

Storage:

Preservative: 0.03% Proclin 300. Constituents: 50% Glycerol, 0.01M PBS, PH 7.4

Product Images



Immunohistochemistry of paraffin-embedded human testis tissue using PACO39134 at dilution of 1:100.