

CMTM2 Antibody



PACO39182

Product Information

Size:

50ug

Reactivity:

Human

Source:

Rabbit

Isotype:

IgG

Applications:

ELISA, IF

Recommended dilutions:

ELISA:1:2000-1:10000, IF:1:50-1:200

Protein Background:

nucleoplasm.

Gene ID:

CMTM2

Uniprot

Q8TAZ6

Synonyms:

CKLF-like MARVEL transmembrane domain-containing protein 2 (Chemokine-like factor superfamily member 2), CMTM2, CKLFSF2

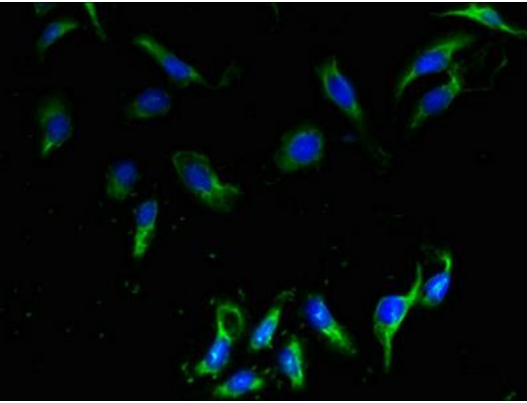
Immunogen:

Recombinant Human CKLF-like MARVEL transmembrane domain-containing protein 2 protein (1-80AA).

Storage:

Preservative: 0.03% Proclin 300. Constituents: 50% Glycerol, 0.01M PBS, PH 7.4

Product Images



Immunofluorescent analysis of HeLa cells using PACO39182 at dilution of 1:100 and Alexa Fluor 488-conjugated AffiniPure Goat Anti-Rabbit IgG(H+L).