

Product Information

Size:

50ug

Reactivity:

Human

Source:

Rabbit

Isotype:

IgG

Applications:

ELISA, IF

Recommended dilutions:

ELISA:1:2000-1:10000, IF:1:50-1:200

Protein Background:

Mitochondrial carrier required during erythropoiesis. Probably involved in the biosynthesis of heme, possibly by facilitating 5-aminolevulinate (ALA) production. May act by importing glycine into mitochondria or by exchanging glycine for ALA across the mitochondrial inner membrane.

Gene ID:

SLC25A38

Uniprot

Q96DW6

Synonyms:

Mitochondrial glycine transporter (Mitochondrial glycine transporter GlyC) (Solute carrier family 25 member 38), SLC25A38

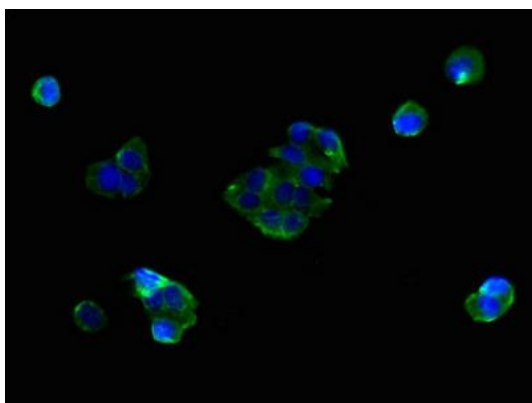
Immunogen:

Recombinant Human Mitochondrial glycine transporter protein (1-30AA).

Storage:

Preservative: 0.03% Proclin 300. Constituents: 50% Glycerol, 0.01M PBS, PH 7.4

Product Images



Immunofluorescent analysis of MCF-7 cells using PACO39290 at dilution of 1:100 and Alexa Fluor 488-conjugated AffiniPure Goat Anti-Rabbit IgG(H+L).