

PACO39362

Product Information

Size:

50ug

Reactivity:

Human

Source:

Rabbit

Isotype:

IgG

Applications:

ELISA, IF

Recommended dilutions:

ELISA:1:2000-1:10000, IF:1:50-1:200

Protein Background:

Component of the GPI transamidase complex. Essential for transfer of GPI to proteins, particularly for formation of carbonyl intermediates.

Gene ID:

PIGS

Uniprot

Q96S52

Synonyms:

GPI transamidase component PIG-S (Phosphatidylinositol-glycan biosynthesis class S protein), PIGS

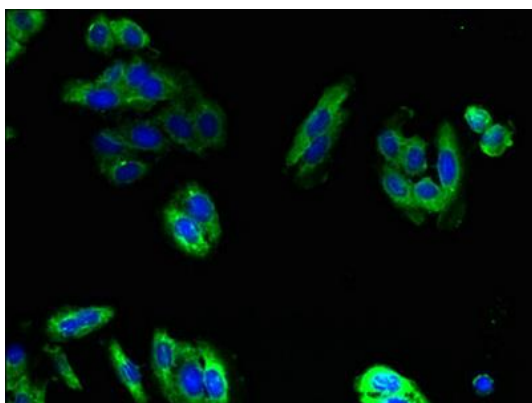
Immunogen:

Recombinant Human GPI transamidase component PIG-S protein (40-300AA).

Storage:

Preservative: 0.03% Proclin 300. Constituents: 50% Glycerol, 0.01M PBS, PH 7.4

Product Images



Immunofluorescent analysis of HepG2 cells using PACO39362 at dilution of 1:100 and Alexa Fluor 488-conjugated AffiniPure Goat Anti-Rabbit IgG(H+L).