

# INTS14 Antibody



PACO39370

---

## Product Information

**Size:**

50ug

**Reactivity:**

Human, Mouse

**Source:**

Rabbit

**Isotype:**

IgG

**Applications:**

ELISA, WB, IHC

**Recommended dilutions:**

ELISA:1:2000-1:10000, WB:1:1000-1:5000,  
IHC:1:20-1:200

**Protein Background:**

**Gene ID:**

INTS14

**Uniprot**

Q96SY0

**Synonyms:**

Integrator complex subunit 14 (von Willebrand factor A domain-containing protein 9),  
INTS14, C15orf44 VWA9

**Immunogen:**

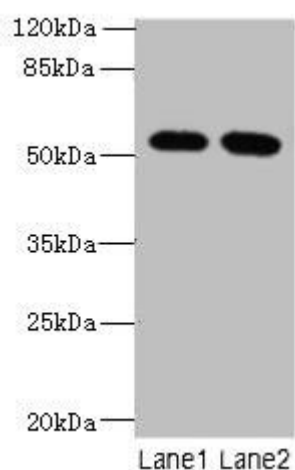
Recombinant Human Integrator complex subunit 14 protein (231-518AA).

**Storage:**

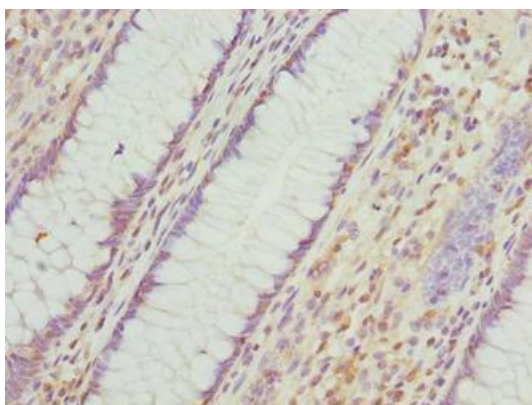
Preservative: 0.03% Proclin 300. Constituents: 50% Glycerol, 0.01M PBS, PH 7.4

## Product Images

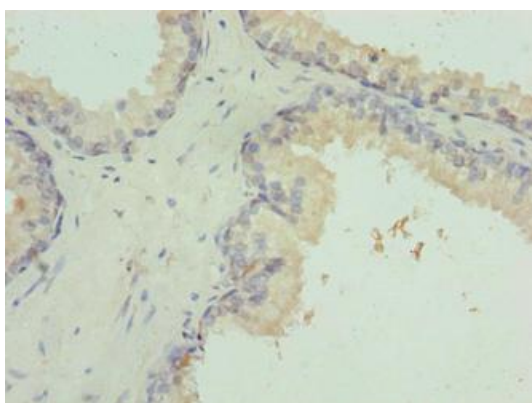
---



Western blot. All lanes: INTS14 antibody at 4 $\mu$ g/ml. Lane 1: HeLa whole cell lysate. Lane 2: NIH/3T3 whole cell lysate. Secondary. Goat polyclonal to rabbit IgG at 1/10000 dilution. Predicted band size: 58, 10, 49, 51 kDa. Observed band size: 58 kDa.



Immunohistochemistry of paraffin-embedded human colon cancer using PACO39370 at dilution of 1:100.



Immunohistochemistry of paraffin-embedded human prostate cancer using PACO39370 at dilution of 1:100.