

SLC22A18AS Antibody



PACO39382

Product Information

Size:

50ug

Reactivity:

Human

Source:

Rabbit

Isotype:

IgG

Applications:

ELISA, IHC

Recommended dilutions:

ELISA:1:2000-1:10000, IHC:1:20-1:200

Protein Background:

Gene ID:

SLC22A18AS

Uniprot

Q8N1D0

Synonyms:

Beckwith-Wiedemann syndrome chromosomal region 1 candidate gene B protein (Organic cation transporter-like protein 2 antisense protein) (Solute carrier family 22 member 1-like antisense protein) (Solute carrier family 22 member 18 antisense protein) (p27-Beckwith-Wiedemann region 1 B) (p27-BWR1B), SLC22A18AS, BWR1B, BWSCR1B, ORCTL2S, SLC22A1LS

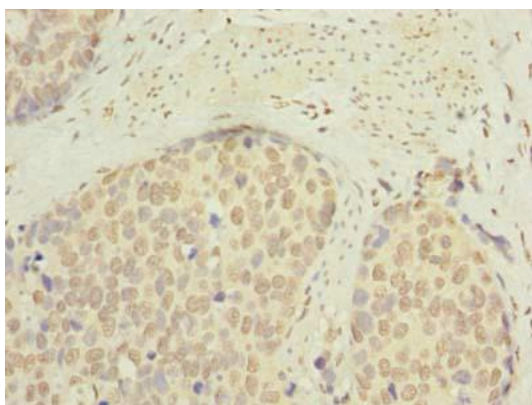
Immunogen:

Recombinant Human Beckwith-Wiedemann syndrome chromosomal region 1 candidate gene B protein (1-150AA).

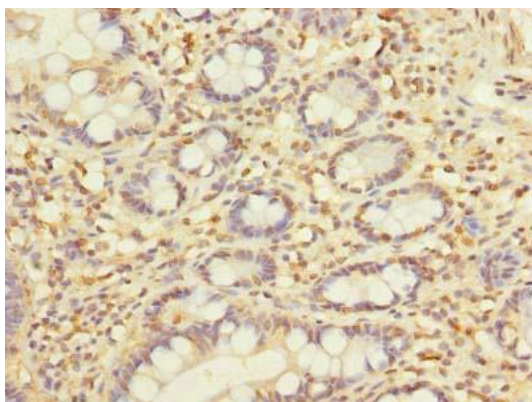
Storage:

Preservative: 0.03% Proclin 300. Constituents: 50% Glycerol, 0.01M PBS, PH 7.4

Product Images



Immunohistochemistry of paraffin-embedded human gastric cancer using PACO39382 at dilution of 1:100.



Immunohistochemistry of paraffin-embedded human small intestine tissue using PACO39382 at dilution of 1:100.